



impact report
2020-21



a year of resilience,
resourcefulness,
and responsiveness
in the care of
our community





BRIAN SCHNEIDER



BRETT ANDREWS

dear member of the PRC community,

What a year it's been. We have faced a global pandemic, re-openings and further shut-downs, racial unrest, protests, and a national conversation about the systemic issues our clients have struggled with for decades. Through all this uncertainty, one element remained constant: PRC's commitment to helping its clients no matter what.

Despite COVID, shelter-in-place, and a multitude of City restrictions, PRC continued to provide critical assistance to so many who rely on us for a range of services, from helping meet basic human needs to crucial behavioral health. We found a new way of doing business, connecting with one another, and ensuring our clients stayed safe, housed, and healthy. We are so proud of how our staff innovated to be able to respond to increased needs.

Not only were we able to shift to providing services virtually, we were able to grow and deepen our impact. We opened our second psychiatric respite center, Hummingbird Valencia, a low-barrier site for people to begin the path toward continuing treatment. We were selected as one of five recipients of the first City funding dedicated to services for the Black trans community. And we were selected to lead the transformation of Leland House, the second largest HIV/AIDS housing facility in California, into transitional housing, a testament to the City's confidence in PRC.

It truly takes a village to care for a village, particularly those most vulnerable among us. We could not do this work without you, the PRC community. You help us advance our mission, and we are committed to being here for as long as our community needs us. We have thrived for 34 years because we respond to our community's needs.

If the past year has taught us anything, it's to prioritize what we value most, and to express gratitude for those things we often take for granted. It is in this spirit that we are pleased to present this impact report. It embodies you and everyone who makes up the PRC community.

Thank you.

Brian Schneider
President,
Board of Directors

Brett Andrews
Chief Executive Officer

demographics

WHO WE SERVE



4,400

Total Number of People Served during 2020/21

INCOME



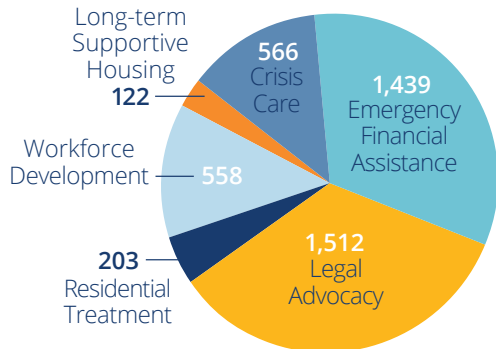
99%
Low Income

HEALTH

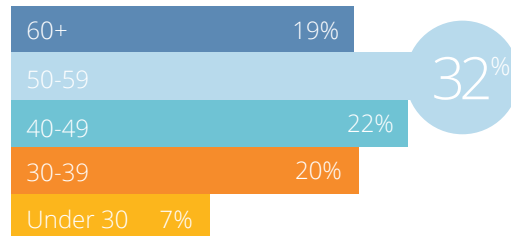


60%
HIV Positive

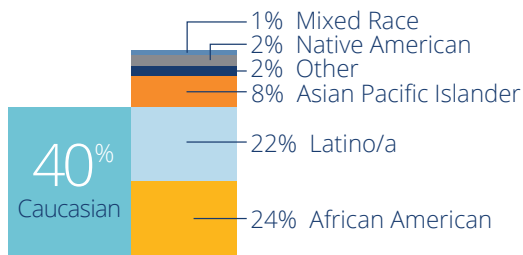
PROGRAM



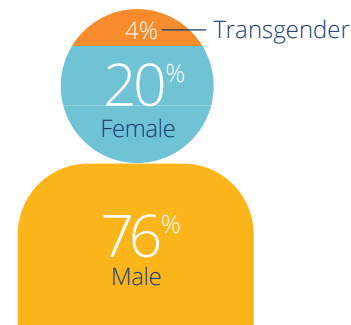
AGE



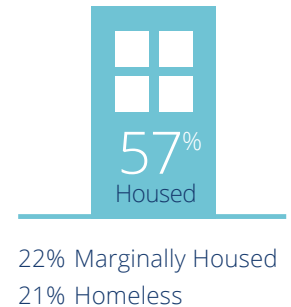
RACE/ETHNICITY



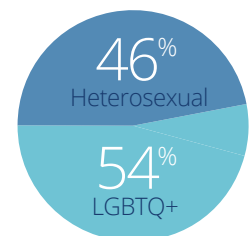
GENDER



HOUSING STATUS

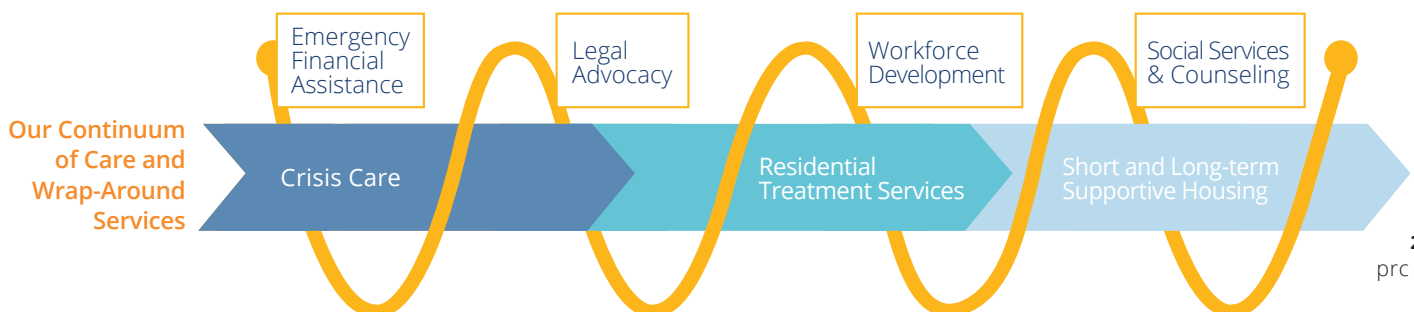


SEXUAL ORIENTATION



“ PRC HAS GROWN, EXPANDED, AND DEEPENED ITS SERVICES OVER THE YEARS TO RESPOND TO THE NEEDS OF OUR MOST VULNERABLE COMMUNITY MEMBERS. WE HAVE INTEGRATED THESE SERVICES INTO A CLIENT-CENTERED CONTINUUM OF CARE SO THAT INDIVIDUALS IN CRISIS CAN ENTER AT ONE END AND MOVE ALONG A SEAMLESS PATHWAY WITH WRAP-AROUND SERVICES THAT MEET THEM WHERE THEY ARE AND LIFT THEM UP TO A PLACE OF STABILITY WITH MORE POSITIVE HEALTH AND ECONOMIC OUTCOMES. ”

Brett Andrews, Chief Executive Officer of PRC



crisis care

“ HUMMINGBIRD VALENCIA PROVIDES US WITH ANOTHER LINKAGE IN A NETWORK OF PROGRAMS THAT ARE BRINGING PEOPLE EXPERIENCING A CRISIS ON THE STREETS TO A SAFE PLACE INDOORS WHERE THEY CAN STABILIZE BEFORE TAKING THEIR NEXT STEP TOWARD WELLNESS. ”

Dr. Grant Colfax, San Francisco Director of Public Health

JOE HEALY DETOX PROGRAM

was created in 2000 in response to the large number of homeless deaths as a result of substance abuse.

It was believed that many homeless people refused to enter a hospital because the setting was profoundly uncomfortable for them. Joe Healy is unique as the only community-based detox program in San Francisco.

It offers a 21-day medically-managed stay for up to 28 people each day and night.



278 people accessed PRC's community-based detoxification services in 2020/21.

84% for alcohol dependence
16% for opioids and other substances



75% made progress on their treatment goals.



COVID IMPACT

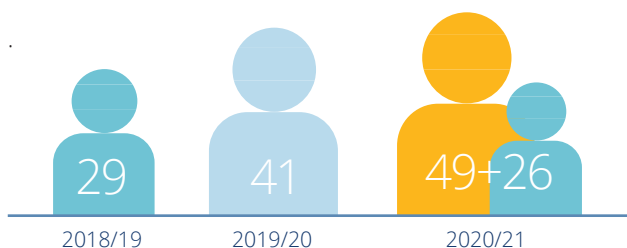
As essential services, during 2020/21 all crisis care programs remained open, albeit with reduced capacity to accommodate COVID-19 safety protocols. These resulted in very few positive cases across PRC staff and clients. Throughout the pandemic, rapid result COVID-19 tests were completed on-site prior to entry at Joe Healy and Hummingbird Valencia, with plans to roll out testing at other sites.

HUMMINGBIRD PLACE NAVIGATION CENTERS

offer essential respite and a first step into care for otherwise unsheltered San Franciscans.

The Hummingbird model, named by a PRC client for its openness to drop-ins, is a low-barrier alternative to psychiatric emergency services in which people in crisis can access a safe and comfortable environment for day or overnight use. Participants can take part in meals, laundry, showers, storage, and – most importantly – begin to build trust with skilled staff who can link them to community-based services, including residential treatment.

Following the success of Hummingbird Potrero located on the Zuckerberg San Francisco General Hospital campus, Hummingbird Valencia opened on May 18, 2021, strategically located in San Francisco's Mission District.



HUMMINGBIRD POTRERO



418 overnight guests stayed an average of 21 days



Daily access hosted 7,403

HUMMINGBIRD VALENCIA (from its opening on May 18, 2021)



94 overnight guests stayed an average of 16 days in its first 14 weeks



Daily access hosted 541

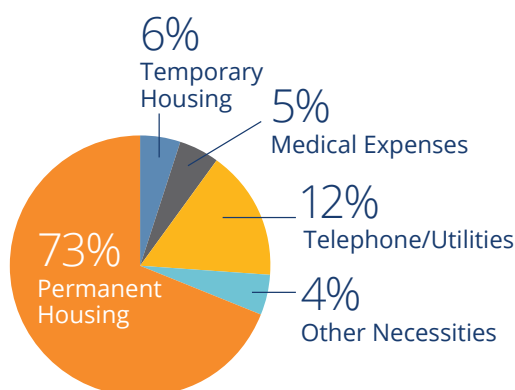


BUILDING HEALTH

EMERGENCY FINANCIAL ASSISTANCE (EFA) is a lifeline.

Emergency grants of up to \$1,500 per year are provided to support low-income San Franciscans living with HIV to mitigate economic and housing barriers that impact their medical care. Eviction Prevention and Housing Stabilization funds back rent or move-in expenses. Emergency Support helps with unexpected utility bills, medications, or keeping the phone turned on.

1,439 clients living with HIV accessed \$1,190,942 in emergency funds in 2020/21.



Emergency Financial Assistance has served more than 50,000 clients with \$27.4m in assistance since records began in 1997.



COVID IMPACT

As an essential service, EFA remained open throughout the pandemic and shelter-in-place. We experienced significantly increased demand due to COVID. There was often a line of clients out the door and around the block. Thanks to additional funding from the SF Department of Public Health's HIV Health Services, Health Resources and Services Administration's Ryan White HIV/AIDS Program, City General Funds, the Dream Keeper Initiative, and Gilead Sciences, Inc., among others, we were able to meet this greater need, often providing larger amounts of assistance, to keep people housed.

FROM THE FRONT LINES

“WE'RE SEEING MORE CLIENTS IN MORE DESPERATE SITUATIONS. WE'RE ABLE TO KEEP THEM HOUSED. THEY'RE SO OVERWHELMED AND GRATEFUL, IT'S HARD TO DESCRIBE.”

Lee Harrington, Director of Client Services in Emergency Financial Assistance

IN OUR CLIENTS' WORDS

“I WANT TO THANK YOU IMMENSELY FOR BEING KIND AND HELPING ME. ONCE AGAIN YOU HAVE COME THROUGH FOR ME DURING A STRESSFUL FINANCIAL SITUATION, AND I'M TRULY GRATEFUL.”

“I AM IN A MUCH BETTER SITUATION TODAY BECAUSE OF THE HELP PRC PROVIDED ME.”

“I WANT TO EXPRESS MY DEEPEST GRATITUDE FOR YOUR ASSISTANCE WITH MY RENT. WITHOUT THE HELP FROM PRC I WOULD BE IN AN EVEN DEEPER HOLE THAT COULD BECOME IMPOSSIBLE TO CLIMB OUT OF.”

stabilizing services



LEGAL ADVOCACY connects people to the income and healthcare necessary to secure stable housing and improve health outcomes. PRC's team of attorneys and legal assistants provide legal consultation, representation, advice, and training so vulnerable individuals can access and retain the federal benefits they're eligible to receive.

1,512 individuals accessed and retained stable income and healthcare during 2020/21.

Boasting an 81% win-rate for all adjudicated cases – compared to an overall approval rate of about one third – individuals are almost 3x more likely to receive the disability income they are entitled to when they have an advocate on their side.



\$2,356,417

Retroactive Benefits

\$116,603

Ongoing Monthly Payments

This past year, Legal Advocacy also expanded to include navigation services to help link clients to critical public benefits and programs.

FROM THE FRONT LINES

“WE'RE ALL TRYING REALLY HARD TO GET BENEFITS FOR PEOPLE WHO ARE DISABLED. I TRY TO USE MY POWERS FOR GOOD SO THAT PEOPLE GET THE CARE THEY NEED. I AM INCREDIBLY THANKFUL THAT PRC EXISTS, AND THAT IT STAYS TRUE AND LIVES ITS VALUES.”

Liz Pickell, Senior Benefits Advocate

EQUAL ACCESS TO HEALTHCARE PROGRAM provides representation, education, and counseling on matters related to healthcare access so that people living with HIV/AIDS do not feel immobilized by concerns over losing healthcare as they make significant life changes.

The EAHP team also educates clients and community providers about their rights and responsibilities and is pro-active when healthcare changes have negative impacts on vulnerable people living with HIV/AIDS.

95% of clients maintained or increased access to healthcare.

220 clients received consultation on social security cases.

451 clients and providers attended EAHP and SF HIV Front Line Organizing Group (SF HIV FOG) trainings.

IN OUR CLIENTS' WORDS

“I HAVE NEVER RECEIVED SUCH LOVING, ATTENTIVE, FOCUSED CARE IN MY LIFE. THANK YOU TO THE AMAZING TEAM AT PRC.”

“YOUR SERVICES WERE ESSENTIAL TO MY WELL-BEING WHILE I WAS HELPED.”

“YOUR AGENCY IS A TRUE GEM LIKE NO OTHER. THANK YOU SO VERY MUCH.”



COVID IMPACT

With the shift to remote working, there were significant challenges in communicating with clients lacking technology. To mitigate this, staff adjusted processes to improve efficiencies, strengthened relationships with clients' case managers, and offered the opportunity to virtually attend hearings together in our offices.



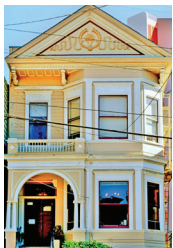
BUILDING HOPE

BAKER PLACES RESIDENTIAL BEHAVIORAL HEALTH TREATMENT PROGRAMS

include seven service-rich, home-like environments that help people overcome substance use, mental illness, and co-occurring or dual disorders. Inside each licensed treatment community, residents participate in counseling to identify issues that may have placed them at risk in the past. In concert with staff and each other, they develop and test support systems, practice self-regulation, and build independent living skills.

In 2020/21, 203 people accessed substance use and mental health treatment programs at PRC Baker Places.

65% of residents met one or more goals.

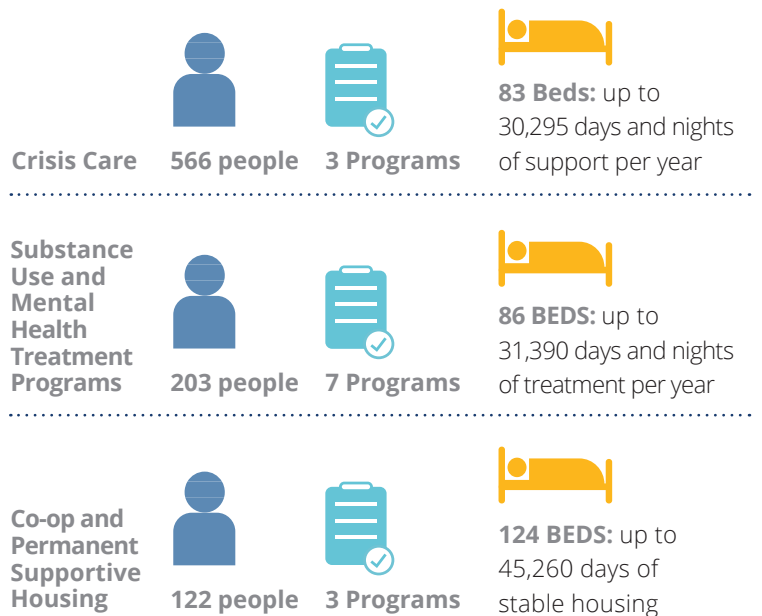


In the 1960's, PRC Baker Places behavioral health treatment programs pioneered the social rehabilitation model, in this case a home setting that teaches residents group and independent living. Now a best practice recommended by the California Department of Health Services, this model recognizes the power of community and environment to drive positive behavioral change. In practice, it means inside each treatment program we create an intentional community, highly attuned to the impact of social and physical environments on supporting health.

IN OUR CLIENTS' WORDS

“GOING TO PRC WAS A MATTER OF LIFE AND DEATH. THIS IS A SERVICE THAT PEOPLE REALLY NEED. IT'S IMPORTANT TO KNOW HOW LIFE CHANGING AND IMPORTANT IT IS.”

PRC'S RESIDENTIAL CONTINUUM 2020/21



COVID IMPACT

As essential services, during 2020/21 all treatment programs remained open, adhering to strict COVID-19 safety protocols. These resulted in very few positive cases across PRC staff and clients. Following City health guidelines, rooms at each facility were dedicated as isolation/observation rooms for potential COVID cases, thus limiting resident capacity. To avoid discharging residents during the height of a pandemic, we were limited in our intake, significantly curtailing the total number of individuals served over the course of the year.

elevation services



WORKFORCE DEVELOPMENT,

PRC's nationally recognized rehabilitation services, helps people with mental and physical disabilities get back to work at more than twice the statewide average. We offer a range of individualized services including assessment, career navigation, and job search assistance.

In 2020/21, PRC helped 558 adults reinvigorate their livelihoods, independence, and self-esteem, and it did it all virtually, a huge lift for many participants who'd never before touched a computer.

On average, PRC's clients earn \$24.47/hr: 50% higher than San Francisco's minimum wage.

Clients enter the workforce in the retail, nonprofit, healthcare, government, and hospitality sectors.

Participants have earned more than \$1,500,000 in wages through PRC's job placements.



COVID IMPACT

Shifting all educational programs virtual was a huge lift, and it highlighted existing digital inequities. Staff forged new partnerships and negotiated funding flexibility to acquire and distribute more than 30 laptops to clients. This is now an integral part of the Lift UP SF program to achieve real equity. Staff taught every student Zoom and how to access email before they could participate in virtual training programs.

IN OUR CLIENTS' WORDS

“WHAT I GAINED MOST FROM THIS CLASS IS THE DEDICATION TO FINISH IT AND SEE MY EFFORTS PAY OFF. I NEEDED TO BE PART OF SOMETHING.”

ACCREDITED TRAININGS

PRC's 24-user computer lab hosts two accredited trainings:

- The Next Step Computer Certificate Program establishes up-to-date computer skills across 90 hours of hands-on instruction.
- The Step Up Clerical Skills Certificate Program develops administrative and occupational facility across 50 hours of employment skill-building.

CAREER PATHWAYS

PRC's Lift UP SF peer-to-peer training program came into its own in 2020/21. This 64-hour intensive program with individual coaching and peer group support prepares adults with “lived experience” in mental health and substance use treatment settings to meet the growing need for peer health professionals.

Of 148 enrollments across three training programs, 93% earned Certificates.

NEW COMMUNITIES OF FOCUS

During 2020/21, PRC's Workforce Development program was one of only five recipients awarded the first City funding dedicated to providing services to the Black trans community as part of the newly announced Dream Keeper Initiative, which redirects funding from law enforcement into San Francisco's Black and African-American community, in this case organizations providing technical assistance to Black transgender people.

FROM THE FRONT LINES

“THE PEOPLE WE SERVE INSPIRE US IN OUR WORK. THESE PEOPLE HAVE IT. WE JUST HELP THEM SEE THEIR STRENGTHS AND HOW TO LEVERAGE THEM. AFTER THEIR TIME HERE, THEY REALIZE THEY HAVE SOMETHING TO CONTRIBUTE TO SOCIETY AND THAT THEY HAVE VALUE.”

Joe Ramirez-Forcier, Managing Director, Workforce Development



BUILDING COMMUNITY

HOUSING, SOCIAL SERVICES & COUNSELING

Graduating from a training program or a treatment program doesn't mean you're on your own. We offer stepped-up and stepped-down support to meet the individual needs of each of our clients, and wrap-around social services as needs and goals change.

COOPERATIVE (CO-OP) SUPPORTIVE HOUSING

PRC Baker Places helps graduates of its substance use and mental health treatment continue their path toward independence by pairing case management with rental subsidies in more than 20 (and growing) PRC-managed co-ops scattered across San Francisco. During this pivotal and transitional period for residents, PRC staff provide communal living and individual support services for vocational, educational, social services, and recreational needs. Co-ops are shared multi-bedroom apartments, where residents live independently, practice problem solving, and build up confidence making healthy life choices.

Given the Bay Area's high costs of living and lack of affordable housing options, taking a "next step" from treatment to housing or co-op to independent living is increasingly difficult. Leaving San Francisco may seem like easy advice, but leaving one's support network behind brings its own challenges. PRC works with each client to develop a long-term housing plan responsive to their specific constellation of needs and resources.

PERMANENT SUPPORTIVE HOUSING

The Odyssey House is a permanent and supportive home for ten African-American adults with extensive histories of institutionalization, homelessness, mental illness, and substance use. Unique in San Francisco, PRC's skilled, compassionate staff are on-site 24 hours a day.

IN OUR CLIENTS' WORDS

“ PRC HAS BEEN TRANSFORMATIONAL FOR ME. IT'S TAKEN ME FROM A REALLY HOPELESS PLACE TO BECOME A HEALTHY, STABLE INDIVIDUAL WITH MY MENTAL HEALTH AND SUBSTANCE USE ISSUES MANAGED.”



153 people

accessed long-term supportive housing in 2020/21



expanded services

BLACK LEADERSHIP COUNCIL

In 2018, the San Francisco Department of Public Health issued the Black/African-American Health Report, which laid bare obstacles to health for the Bay Area African-American community. PRC CEO Brett Andrews saw this as a call to action. He reached out to his fellow Black leaders to consider what could be done to advance positive change and healing through policy reforms and community-informed legislation strategies. The Black Leadership Council was born.

The Black Leadership Council (BLC) is a San Francisco-based group of leaders across varied sectors – public, civic, and private – that seek to improve conditions for the Black/African American population in the Bay Area and across California. It does this by leading strategic initiatives across sustained economic, legislative, and community engagement efforts that harness the best thinking, practices, and ideas for Black Prosperity in San Francisco, the region, and the state.



**BLACK
LEADERSHIP
COUNCIL**

FOUR AREAS
OF FOCUS:
Wealth
Health
Housing
Education

**47 (and counting) cross-sector
African-American leaders:**

- Met with 20 state elected officials including the CA Legislative Black Caucus
- Penned 20+ legislative support letters
- Advocated for the elimination of debt across four primary areas that hinder financial security for the 11 million Californians living in or near poverty, which was included in the state's historic Build Back Boldly budget

PRC is...
compassionate
awesome
wholesome
fun advocate
resourceful
effective family
ethical helpful
welcoming amazing
caring impactful
life-changing
acceptance strong
empathetic nimble
tenacious
practical inclusive
passionate brilliant
innovative
dignity responsive
client-centered
encouraging community
professional resilience
dedication diverse



JASMINE

It's not every day that one of PRC's former clients comes out the other end to join the staff. But that's just what Jasmine did when she recently took a role in Workforce Development's newly launched Black Trans Initiative, funded by the City's Dream Keeper Initiative to reallocate resources toward technical assistance for Black transgender people.

This is a population Jasmine is especially familiar with. "I always wanted to work with transgender women. I didn't always identify as trans myself but that changed. I want to help transgender women to identify what they want to do."

Jasmine didn't always know what she wanted to do. When she took her first PRC computer class, she was coming out of surgery and about to lose her housing. Her instructor helped her secure a spot at PRC's co-opt supportive housing. After completing her course, Jasmine felt confident enough to enroll at City College. It was overwhelming as a person with a background of trauma but Jasmine persevered, earning a community health workers certificate and a 4.0 grade average, while also serving as an advocate for other trans students.

Looking to do more, Jasmine considered training as a social worker when the opportunity at PRC arose. The idea of building a new program from the ground up was scary but exciting. Her PRC Lift Up SF peer-to-peer training helped immensely. "The things I learned earlier from a book went right out the window when the client was sitting across from me and all that trauma came back. I had to put my feelings on the backburner but I know now this is for me. It's not easy but it made me love it even more. I know that I belong in this role."

"I WANT TO HELP ANYONE WHO WANTS HELP BETTERING THEIR LIVES JUST LIKE I GOT HELP. IF NOT FOR PRC, MY LIFE WOULD BE A DIFFERENT STORY. I CAN'T BELIEVE I'M WORKING HERE NOW. THOSE WHO HELPED ME FOUR YEARS AGO ARE NOW MY CO-WORKERS. I WENT THROUGH THE ENTIRE PROGRAM, AND HERE IS THE OUTCOME. I HAVE THE BEST JOB AND I THINK THIS IS JUST THE BEGINNING."



JOSEPH

In December 2017, Joseph came to Ferguson Place, our residential treatment program that was the first of its kind to work with individuals living with HIV/AIDS and co-occurring substance use and mental health issues.

Joseph was homeless, using drugs, and malnourished – alternating between shelters and other people's homes. He was being treated at Zuckerberg San Francisco General Hospital Ward 86 when a social worker referred him to PRC.

Unsure whether to take a chance, Joseph spoke to Bridgette Washington, Ferguson's Program Director, who sensed the urgency in Joseph's voice and said, "Please come over." They already had a bed ready for him. Joseph shared, "I laid down and cried, it felt so good to have my own bed."

Over the 90-day program, Joseph learned things that many of us take for granted, but helped him to get off drugs and create a life plan for himself. Individualized treatment planning and counseling, group sessions, and structure gave Joseph the tools he could take with him after his stay. The social rehabilitation approach helped Joseph to open up and trust people again and make friendships he maintains to this day.

Today Joseph works an incredibly rewarding job as a caretaker to the elderly and adults with developmental disabilities and will soon begin a vocational nursing program. He received help with his school application from PRC as well.

He shares, "I was inspired because I was taken care of. I saw that in all my counselors. I want to do that too. I don't know how to repay them. This is how I can pay them back. Any help I can give, I'll do it."

When Joseph left Ferguson House, he wanted to do something to thank them. So he drew the house, found a wooden frame at a second hand store, and gave it to Bridgette. It still hangs in the house today. Joseph shares,

"PRC HAS BEEN A BIG HELP IN TURNING MY LIFE AROUND. WITHOUT PRC, I WOULDN'T HAVE A LIFE."

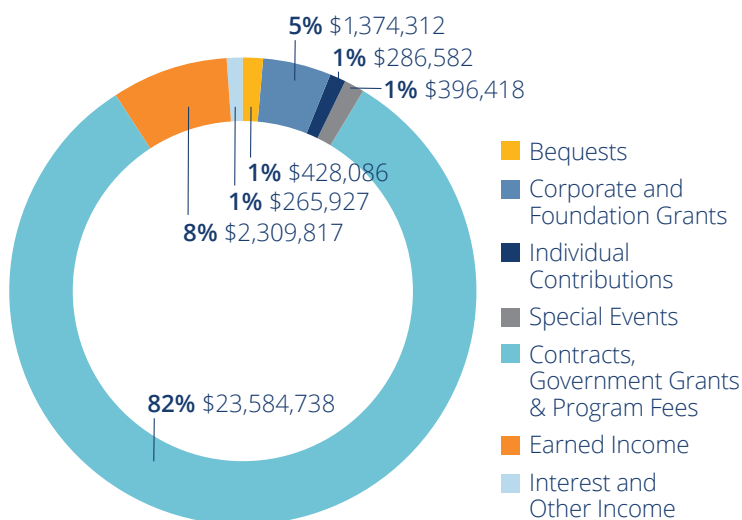
financial position

These fiscal year 2021 financials are management estimates and do not reflect the audit report for PRC, which comprises consolidated financial statements that include a financial accounting of Baker Places, Inc. (BP), a subsidiary of PRC. As PRC is a sole corporate member of BP due to having a controlling financial interest in BP, FASB ASC 958-810-25-2 requires that PRC consolidate financials with BP in order to remain in accordance with U.S GAAP. However, PRC and BP remain separate 501(c)(3) organizations with separate 990 filings.

Financials for the fiscal year beginning
July 1, 2020 through June 30, 2021

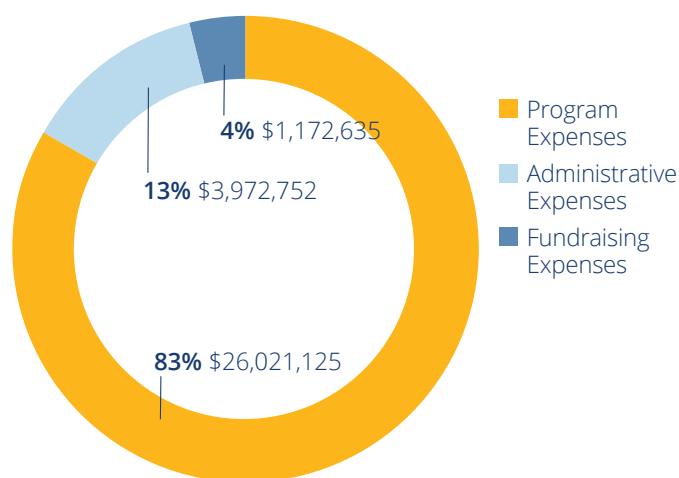
REVENUE, GRANTS AND OTHER SUPPORT

\$28,645,880



EXPENSES

\$31,166,512



Does not include Depreciation.

WAYS TO HELP

DONATE ONLINE OR WITH A CHECK OR CREDIT CARD

Visit prcsf.org/donate or send your gift to Development Department, PRC, 170 9th Street, San Francisco, CA 94103.

BECOME A MONTHLY DONOR

Support PRC all yearlong by enrolling in monthly giving.

DOUBLE YOUR IMPACT WITH A COMPANY MATCH

Many employers match gifts made by their employees, thus doubling the impact of your support. Check with your employer to initiate the process.

GIVE A GIFT OF STOCK

Contact giving@prcsf.org.

MAKE A LEGACY GIFT

Consider including PRC in your legacy plans to make a lasting impact. Contact giving@prcsf.org.

SHARE

Follow us on Facebook, Twitter, LinkedIn, and Instagram to stay up-to-date on our work and share with your friends and family.

DONORS

We express our deepest gratitude to each and every one of our supporters. Our work is possible thanks to the generosity and breadth of contributions recognized here. This listing reflects contributions received between July 1, 2020 and June 30, 2021. **Thank you for your support!**

INDIVIDUALS

\$100,000+

Estate of Frederick H. Booth, Jr.
James C. Hormelt and Michael
P. N. Hormel
Estate of Sylvester James,
Queen of Disco
Newstrom Living Trust

\$25,000+

Anonymous (2)

\$10,000+

Brett Andrews
John Fisher & Raphaela
Lipinsky DeGette
Laura Powell and Chuck Byce
Timothy A. Wong 2020
Revocable Trust

\$5,000+

Doug Browning
Josh and Dana Frieman
Robert Lieberman and Brian Schneider
Gary Nichols
Timothy Schroeder
Anonymous (2)

\$2,500+

Katherine M. Bella and Jay Harris
Rob Faulkner and Don McDonald
The Raymond Hernandez Trust
Eric Keith
Kendall Fund
Leslie Family Foundation
David McCrory and Andrew Chen
Larry Rich
Kent Roger and Daniel Hancock
Edrie Schade
Thomas Tarnowski
Joe Tuohy

\$1,000+

Sherilyn Adams
Tania Amochaev
Warren E. Anderson
Derek Barnes and Ted Hiscox
Michael Bien
John Bressan
Frank Ching and Charley Kearns
Karl Christiansen
Greg Cioth
Lucius Conrad and Jeffrey Stone
Bradford Crowell and Gary Koehler
Robert Dockendorff
Elizabeth Downing
Thomas Durein
David Fink
John Fostel
Thomas R. Fox Family
Charitable Foundation
Edward Garcia
Paul Grippardi and Kevin Bentley
Ralph Hibbs
Michelle Jester
Neil Lang and Joseph J. Pessa Jr.
Mark Leno

David Losso
Kathie Lowry
James Loyce
Anne Luna and Jon Haugh
Bill and Tim Matheson
Ryan McKeel and Austin Riley
Mairi McKeever and Chuck Lewkowicz
Tomiquia Moss
Mrs. Elizabeth Y. Nickel
Geoffrey Nin
Gary Osten and Ralph Torrez
Eric Panatta
Zachary Papilion
Thomas Peterson
Charles Ray
Jerry Roberts
Alber Saleh
Arup Sarkar
Justin Sawyers
John Silowsky
William Turner
Stephen and Katherine Van Dusen
Will Victoria
Anonymous (3)

\$500+

Sheila Aharoni
Pamela Anderson
Mary Ann Jones
Lauren Antonoff and Ken Treiger
Scott Arai
Timothy Ault
Walter Bowman
James Carlson
Dan & Gin Charitable Fund
Camden Davis & Greg McKnight
Thomasina DeMaio
William Deriso
Tom DiRenzo and Andrew Belschner
Daniel Drummer
Bette Ann Fleischacker
Joshua Glatt
Patrick Gonzales and
Christopher Panarites
Peter Grandine
Jim Haas
Dustin Hart
Gregory Herek and John Dynis
Richard Hoffman
John Hughes
Dan Joraanstad and Bob Hermann
Faith in the Future Fund of
Horizons Foundation
Kathleen Kennedy
Cynthia and T Wayne Lawrence
The LeNoble Family Charitable Fund
Manit Limlamai
Jeffery Maki
Kippy Marks
Darrin Martin
Ed Mathews and Matthew Karabaic
Henry Milich
Paul Moffett
Michael Niczyporuk and
Rachel Forisha
Jim Oerther
Rob Pascual
Randi and Saikat Paul

Frank Pietronigro
Ben Porter
Michael Proctor and Eric Bernier
The Resiliency Fund
Alisia Salters
Shearer Family Trust
Dan Slaughter and Stephan
Blachowski
Mr. Albert Gordon Smith
Edward Steinforth
Andrew Tompkins
Patricia Tuohy
Lee Vaughn-Ogin
Daryl Walker and Jim Bracken
Michael Wilson
John Windle and Chris Loker
Ben Zotto
Anonymous (2)

\$250+

Norm Abramson and David Beery
Charitable Fund of Horizons
Foundation
Grady Allison
John Antoun
Antonio Baca
Carl Bailey
Mr. Michael Bankert
Trent Bateman
Alvin H Baum Jr Philanthropic Fund
Frank Bennett and
J. Terry Abraham, esq
Katharine Berg and Shane O'Connor
Ellen Bialik
Joe Bolmarcich
Abel Bonilla-Ayala
Bart Broome
Stuart C. Burden Fund
Booje and Art Calfee
Cecily Cassel
Abdelkader Chenbod
Jeffrey Chiu
Eric Collier
Dorothy and Richard Compeau
Jim Constantine
Jerry Cox
Aaron Dillard
Jeremy Doughan
Nev Dowdney
Celeste Erman
Terrance Evans
Susan Fahey
Eduardo Feliz
Ken Ferraris
Michael Foley
Aron Ford
Wayne Forester
Russell Gaspard and John Bien
C. E. Gerndt
Gail and Larry Gilman
Phillip Gosney
Philippe Gosselin
Paul Hempel
Kenneth Henderson
Sterling Hoeree
William Holman
Bethany Hornthal
Bartholomew James

John Jensen and Mari Komine-Jensen
Tailleur Jones-Brown
Nadir Joshua
Brendan Jupp
Scott Justus and Michael Shields
Clare Kay
Martin Korinth
Richard Latulippe
Frank Layton
Tomas Llorence
Gypsy Love
Jeff Lucas
Lester Lute
Jim Maloney
Regina Marsh
Chip McNeal
John Monteverdi
William Muto
Cassandra Najarian
Alex L. Nellas, MD Fund of
Horizons Foundation
Christopher Nelson
Daniel O'Leary
Jerico, Jerry and Letty Padallan
and Jay Luc
Gil Padia
David Pearson
Alfredo Pedroza
Victoria Pollock-Grasso
Kenneth Poudrier and Joe Freund
Allen Register
Matthew Renck
Michael W Runner
James Saliba
Robert Sass and Larry Dark
Tom Schmidt
Gary Shrieves
Bill Stanton
Paul and Glenn Starner-Tate
Lyle Sweeney
Tim Toppin
Mark Troy
Randy Ubillos
Harry Ung
David Varela
Daryl Walker
Susan Wright and Dale Rachmeler
Christopher Zolezzi
Ron Zuckerman
Anonymous (4)

\$100+

Kurt Abney
Seth Abrahamson
Sarah Anderson
Rex Anderson
Barbara Antonucci
Michael Armado
Christine ArmstrongDangles
Stanley Arnold
Oneida Arnold
Sandy and Mike Barychewsky
Thomas Battipaglia
Alex Baty
Joseph and Joyce Behar
Philanthropic Fund
Arnaud Berlioux
Tanner Blew

2020-21
prc impact
report

Gerry Blunt
 Darren Bondy
 Larry Bongort and Douglas Shoemaker
 Byrd Brandon
 Frank Brooks
 Eric Brouch
 Ralph Bruneau
 Robert Burnside
 Jaron Caldwell
 Larkin Callaghan
 James Campbell
 Bobbie Campbell
 Nichole Carlson
 Patrick Carney
 The David Clark Castanette Trust
 William Caston
 Vicki Polster and Charles Cech
 Victor Cervantes
 Arthur Charles-Orszag
 Hang Cheng
 The Deborah A. Ching Fund
 Katie Christ
 Jeremy Clarke
 Todd Clobes and Dawn Guenthardt
 Mark Cloutier
 Robert Cohen
 Andrew Coile
 Paul Colfer and Jon Gatto
 Cleo Conrad
 April Cooke
 Bill Coppock
 Aaron Correa
 Laurence Costa
 Jessica Coville
 Stephen Crow
 Larry D Crummer
 David Currie
 Andrew Cushing
 Derek Danton
 Michael D'Arata
 Anna Davenport
 Imane Deininger
 Glenn Desandre
 Alejandro Diesta-Troutman
 and Robert Troutman
 Henry Doering
 Hannah Doherty
 Andrew Dombos
 Charlotte D'Ooge
 Thomas Doran
 Roger Doughty
 Roberta Drake
 Lisa Dreyer
 Joseph Driste
 Jacqueline Duncan
 Amina Durrani
 N Dwight Cary
 Chris Eden
 Diane Esparza
 Caroline Everts
 Robert Falsetti
 Martin Fernandez
 Loretta Figueroa
 Glenn Finch
 James Fishman
 Hollis Fleischer
 Sean Foley
 Karen and Roger Ford
 Jonathan Foulk
 Jeffrey Fraenkel
 Steven Fujii
 Javier Galitó-Cava
 Melanie Gangel
 Cameron Geddes
 George E Gibbs
 Aaron Gobler

Marissa Gomes
 Leandro Gonzales
 Alex Gonzalez
 Philip Grant
 Matthew Green
 Brian Gronlund
 Joel Gust
 David Haase
 Scott Haessly
 Christopher Hagenmeier
 Kevin Harding-Toy
 Kenneth Harper
 Briggs Hawley
 John Hemm
 Alvis Hendley
 Tasha Henneman
 George Herzog
 Paul Highfield
 Derik Hilliard
 Bill Hirsh
 Loren Holden
 Geoffrey Holtz
 Patrick Holzfaster
 John Howes
 Kathleen Hudak
 AJ Huff
 Jess Hutchins
 Kate Izquierdo
 Bill Jennings and Tina Aguirre
 Guy Johnson and Lisa P
 Rev. Dr. Diane Johnson, PhD
 Bridget Johnson
 Zane Johnston
 Marguerite Judson
 Brian Kamps
 John Kardys
 Russell Kassman
 Twyman and Jesse Keene
 Donald Kelley and Susan Getman
 Maurice Kelly
 Lawrence Kent
 Shmuel Khorsandi
 James King
 Steven Knipping
 Jeffrey Kosbie
 Jason Krepka
 Casey Kretzer
 Henry Lamb
 David Landis and Sean Dowdall
 Michael Levy
 Patricia Liming
 Helen Lin
 John Lindner
 Ralph Lindsey
 Kevin Lisle
 Calvin Lombardi
 Richard Lopez
 Spencer Low
 Lydia Lowery
 Charles Lowey-Ball
 Micah Lubensky
 Jason Macario
 Joe MacDonald
 Donnacha Maguire
 Arthur Mainster
 Robert Makowka and Jay Dabbs
 Cyndi and Gary Mall
 Darlene Mann and Cliff Reid
 Daniel Marble
 J Mark Jenkins
 Gregory Marks
 Michael L Markwell
 Elly May
 James McBride
 Mary McClelland
 William McCormick
 Susan McDevitt

Larry McGlynn
 Nicole McIntyre
 Michelle Meow
 Christopher Meza
 Vidal Meza Peña
 Jacques Michaels
 George Miller VI
 James Miller and Jane Echlin
 Charles Minehart
 Courtney Minick and Brandon Long
 Steven Minning
 Krista Mitzel
 Erik Moe
 Randy Monges
 Yves Moralex
 Edward Moran
 Todd Mordick
 Caleb Morrell
 Angela Morrison
 John Mortimer
 Milton Mosk and Thomas Foutch
 Fred Muhlheim
 Kyle Mullinix
 Shigeo Nakatani
 Toni Newman
 James Nichols
 Sean Nichols
 Terri Nicolai
 Christine Noel
 Kyriell Noon
 Vern Nuanez
 Lancehart Numazu
 Matthew Ogden
 Tony Origlio
 Marvin Ortiz
 Marc Owens
 Carly Ozard
 Linda Parini
 Ms. Romelle Parsons
 Lonnie Payne-Clark and Bruce Clark
 Keith Pepper
 Sister Phyllis
 Stephanie Pichel
 Bryce Pinkos
 Michael and Stephen Polansky
 Luke Powell
 Frederick Preyer
 Mike Quint
 Gary Rahlf
 Ron Raiche
 David Randall
 Francisco Recabarren
 Bruce Rodriguez
 William Rogers
 Sister Rosie
 Michael Rubinstein
 Senan Ryan
 Brad Saget
 Rick Salas
 Mark Salimbene
 Scott Sanders
 Anthony Sandrik
 David Sands
 Frankie Sapien
 Dianne Satterlee
 Steven Scarborough
 Coline Schep
 Katherine E Scherlis
 Kerrie Schwartz
 John Sealander
 Andy Shore
 James Siegel
 William J Smith Trust
 Michael Smith
 John Spaetzel
 Demetri and Joshua Sparks
 Linda and Ernest Spinner

Jeff Stiarwalt
 B.J. Stiles and Steven McCollom
 Richard Stoffel
 James Sullivan
 Emily Suma and Zachary Franet
 Eric Swartz
 Mark Tangard
 Art Taylor
 Robert Taylor
 Chuan Teng
 Laura Thomas
 Micah Thomas
 Danielle Thompson
 Kyle and Michael Thornton-Lamp
 Jeffrey Towns
 Herbert Treger
 Tim Tune
 Frank Valenti
 Geoffrey van den Brande
 Matthew Vandall
 Kevin VandenBergh
 Anne L Ver Steeg Anderson
 Christopher Verdugo
 Donald Wanamaker
 James Waugh
 Carlos Waurman
 Jim Wegman and Kevin Monhollen
 Kim and Evan Weintraub
 Benita White
 Mark Whitfield
 Mark Wilhelm and Victor Libbey
 TJ Wilkinson
 John Williams
 William Wilson and Fernando Orlandi
 Erling Wold
 Austin Worden
 Evan Wright
 Roy Wyman
 Shiqi Yang
 Bob Young
 Ronald Zamora and Michael Wibbels
 Mark Ziering
 Charles Zukow and John Ferrara
 Anonymous (9)

INSTITUTIONAL

\$500,000+
 Gilead Sciences, Inc.

\$50,000+
 Chevron
 Target Corporation
 The Hearst Foundation

\$25,000+
 Fifth Generation Inc.
 Quest Diagnostics
 ViV Healthcare
 Wells Fargo Foundation

\$10,000+
 All Home, a project of The Tides Center
 Costco Wholesale Corporation
 Heffernan Insurance Brokers
 Janssen Therapeutics
 Kaiser Permanente
 Macy's Gives
 Molson Coors
 Morgan, Lewis & Bockius, LLP
 Verizon
 Wells Fargo Bank
 Williams-Sonoma, Inc. Foundation

\$5,000+
 AT&T
 Broadway Cares/Equity Fights AIDS

DivcoWest Services
Golden Gate Guards, Inc
Mary Norris Preyer Fund - Piedmont
Trust Company
Twitter
Venable Foundation, Inc.

\$1,000+

AIDS Healthcare Foundation
Apple - Employee Match
Chipotle Mexican
Cisco via Bright Funds
Dark Entries Records
Dignity/San Francisco
Disney Worldwide Services, Inc
Eli and Mae Rosen Foundation, Inc.
Hobson/Lucas Family Foundation
Impulse SF
Ironman Foundation
Landis Communications Inc.
Levi Strauss Employer Match
via Benevity
MAC Viva Glam Fund
Microsoft: Employee Giving
Nuveen Real Estate
Sidney Stern Memorial Trust
The Council of Grand Dukes and
Duchesses of San Francisco

GIFTS IN HONOR OF

Brett Andrews by Sheila Aharoni
Max and in memory of Langston H.
Andrews by Anonymous
Cody Bear by Mona Cummings
Mom Beautiful by Daniel Gosselin
Jim Bracken by Daniel O'Leary
Troy Brunet by Oneida Arnold
Cody Elkin by Beth Klugman
Ken Ferraris by Mark Leno
Pete Greene by Jeff Doney
Sadie Hawkins by
Kendra Tonan-Lizarago
Cynthia & Philip James by
Bartholomew James
Guy Johnson by Carrie Lessley
Grace Labradaughter by Gary Uhouse
Kyle Lee by The Deborah A. Ching Fund
Christopher Lindgren by Sally Lawrence
Rick Little by Kippy Marks
José Martinez by Carlos Wauman
Bill Matheson by Henry H. Doering
Joe Pessa by Herbert Treger
Laura Powell by Emily Scott
Gerry Roberts by David Pearson
Mike Shaw by Dale & Gin Charitable Fund
Billy Stern by Jackson Dodge
John Thomlis by Daniel Cherry
Jack Thompson by Danielle Thompson
Miriam Vishniac by Allison Riemer
Evan Wright by Evan Wright
Sandy by Paul Dorman

GIFTS IN MEMORY OF

Tom Altieri by Paul Colfer
Andrew Balog by Harry Ung
David Joseph Beavers by Harry Ung
Peter Betak by Gloria Dickson
Dusan Bobb by Tim Tune
Larry Bolmarcich by Joe Bolmarcich
Malcolm R. Bonardi, Jr. by
Cynthia Lawrence
Jim Bridges by Tim Tune
Deceased BCC Brother by Kippy Marks
Joseph Brown by Lyle Sweeney
Dan Chang by David Haase
Sam Chong by Harry Ung
David Conger by Charles Mullins

Ken Conklin by Lester Lute
Hector Crawford by Darlene Mann
Hector Crawford by Todd Clobes
Jim Donohue by Kellen Donohue
Gary Ebert by Harry Ung
Rev. John Radford Feagan
by Michael L Markwell
Vince Finkowski by Daniel Corrado
William Lee Finley by Harry Ung
Jan Futch by Terrance Evans
Terry Gauchat by Rod Wood
Gary Gimmy by Katie Christ
Gary Gordon by Harry Ung
Brian Green by Javier Galitó-Cava
Brian Hajducek by Lester Lute
Lexi Hamblin by Lori Hamblin
Goddess Sadie Hawkins by
Latasha Hughes
Goddess Sadie Hawkins by
Scott Darby
Jack Helland by Harry Ung
Sylvester James by Joshua Cheon
Sylvester James by Joshua Cheon
Patrick James by Tailleur Jones-Brown
Eric Jazmen by Roy Wyman
Mark Jensen by Laurence Costa
Douglas Johnson by J.K. Kaufman
Kanani Kauka by Laura Thomas
Lawrence Keleher by Harry Ung
Robert H. Kono by Harry Ung
Steven Liebhart by Harry Ung
Riley Liming by Patricia Liming
Leroy Love by Harry Ung
Billy Lutz by James Sullivan
Harvey Marin by Carlos Gonzalez
Earl Matsuda by Harry Ung
Ryan McFalls by David Boatman
Marty Mellecker by Joel Stahl
Dr. Richard Nadeau by Harry Ung
Gary Newstrom by Myrna Oglesby
Johnny Nicholson by Harry Ung
Scott O'Hara by Harry Ung
Matt Parker by Diane Esparza
Gizmo Phoenix Parrish by
Derriel Carter
Patrick Potter by Darren Bondy
Thomas Rivas by Harry Ung
Ron Robson by Harry Ung
Margo Rosen by Evan Alini
Michael Rubinstein by
Michael Rubinstein
Katherine Scherlis by
Katherine E Scherlis
Clint Spencer by Harry Ung
Frits Staal by Harry Ung
Michael Steingraber by Daryl Walker
Sean Sullivan by Richard Sullivan
Breonna Taylor by Kippy Marks
TJ Truttmann by Lee Vaughn-Ogin
Stuart Tsukamoto by Harry Ung
Julius Turman by Jeff Lucas
Robert B. Wallace by Harry Ung
Randy Warder by Martin Hyland
Mr Nov 2012 Bob Weinhold
by Will Victoria
Jim Welch by David Perry
Michael Wolford by David Haase
George Wong by Harry Ung
Patrick York by Dustin Hart
Patrick York by Geoffrey Nin
Tony C.W. Yuen by Harry Ung
Charley Z by Wendalisa Moon

IN-KIND DONORS

Absinthe Brasserie & Bar
Andre Leon Talley
Ash Fulk

AsiaSF
Barefoot Wine
Blumen Floral Art & Design
Castro Nail Salon
Catch San Francisco
Cliff's Variety
Cruisin' the Castro Walking Tours
Danielle and Nathan Craig
Domaine Carneros
Fifth Generation Inc.
Furnished Quarters
Gary L Virginia
Govino
Gypsy Love Productions
Harvey's
Hot Cookie
Jan Wahl
Jim Moore
Joseph Cozza Salon
Ken Fulk
Kevin Sessums
La Méditerranée
Levi Strauss & Company
Liam Mayclem
Palmia
Patti LaBelle
Poesia Osteria Italiana
R3 Hotel
RNDC
Robert Lieberman and Brian Schneider
Roma's Ristorante Italiano
Ruben Toldeo
San Francisco 49ers Foundation
San Francisco Bay Times
Schumacher Photography
SHN Theatres, LLC
Stoli
The Sausage Factory
Tito's Vodka
Twitter

2021 BARE CHEST CALENDAR FUNDRAISERS

Byrd Brandon
Joshua Bushby
Daniel Cherry
Fred Colmenares
Brian Day
Joshua Glatt
Sterling Hoeree
Frank La
Kippy Marks
Shan Naziripour
Shane Nich
Eric Panatta
Buck Rodenborn
David Sands
Andre Steens
Tin Word

PUBLIC FUNDING

City/County of San Francisco,
Human Services Agency,
Legal Advocacy
City/County of San Francisco,
Office of Economic and Workforce
Development, Disability Focused
Specialized Job Center
City/County San Francisco
Department of Public Health,
Community Behavioral Health
Services, Residential Mental
Health Treatment
City/County San Francisco
Department of Public Health, EDU:
Workforce Development

City/County San Francisco
Department of Public Health,
Employment Services -
Getting to Zero Initiative
City/County San Francisco
Department of Public Health, Equal
Access to Healthcare Program
City/County San Francisco
Department of Public Health,
Frontline Organizing Group -
Getting to Zero Initiative
City/County San Francisco
Department of Public Health,
General Funds
(Dream Keepers Initiative)
City/County San Francisco
Department of Public Health,
General Funds (Emergency
Financial Assistance)
City/County San Francisco
Department of Public Health,
Health and Human Services,
Benefits Counseling
City/County San Francisco
Department of Public Health,
HIV Health Services, LIFT UP SF
City/County San Francisco
Department of Public Health,
On the Job Training Employment
Services
City/County San Francisco
Department of Public Health,
On the Job Training
Employment Services
City/County San Francisco
Department of Public Health,
Ryan White Part A
City/County San Francisco
Department of Public Health,
Ryan White Part A, COVID/CARES
Community Living Campaign SF
ReServe Employment Program
Mayors Office of Housing and
Community Development,
Pre-Employment Services for
People with HIV/AIDS or
Mental Health Disabilities
Mayors Office of Housing and
Community Development,
SSI Advocacy for People with
HIV/AIDS or Mental Health
Disabilities
State of California, AIDS Drug
Assistance Program
State of California, Department
of Rehabilitation
State of California, Office of Statewide
Health Planning and Development,
Workforce Education and Training
Programs, LIFT UP SF
University of California at
San Francisco, Gilead Subaward
US Department of Health and
Human Services, Health Resources
and Services Administration,
Ryan White Special Projects of
National Significance
US Small Business Administration,
Paycheck Protection Program
(PPP) Loan

**If we have made an inadvertent
error in your recognition,
please accept our apology
and let us know at
development@prcsf.org
so we may correct it.**

2020-21
prc impact
report

BOARD OF DIRECTORS

Brian Schneider, President
Kent M. Roger, Esq., Vice President
Tim Schroeder, Secretary
Bill Matheson, Esq., Treasurer
Christopher Brown
Doug Browning
Larkin Callaghan
Josh Frieman
Nelson Gonzalez
Ryo Ishida
Jacques Michaels
Michael Niczyporuk
Zack Papilion
Michael Steinberg
Patty Thayer
Merredith Treaster

ADVISORY BOARD

Michael F. Bell
Michael S. Bernick
James Carter
Karl H. Christiansen, Esq.
Ryan Mckeel
David Stith
Donna Sachet
Gary Virginia
Daryl Walker

EXECUTIVE LEADERSHIP

Brett Andrews, Chief Executive Officer
Joe Alouf, CPA, Chief Financial Officer
John Foster, Chief Clinical Officer
Tasha Henneman, Chief of Policy and Government Affairs
Chuan Teng, Chief of Client Services and Talent

**OUR MISSION IS TO HELP PEOPLE
AFFECTED BY HIV/AIDS, SUBSTANCE
USE, OR MENTAL HEALTH ISSUES
BETTER REALIZE OPPORTUNITIES
BY PROVIDING INTEGRATED LEGAL,
SOCIAL, AND HEALTH SERVICES THAT
ADDRESS THE BROAD RANGE OF
SOCIAL RISK FACTORS THAT IMPACT
WELLNESS AND LIMIT POTENTIAL.**

“AS WE CONTINUE TO REBUILD FROM THE PANDEMIC WITH A FOCUS ON EQUITY, BREAKING CYCLES OF POVERTY, AND CREATING A MORE JUST SOCIETY, WE KNOW WE CAN'T DO THIS WORK ALONE. PRC HAS BEEN AN INCREDIBLE PARTNER FOR THOSE STRUGGLING WITH MENTAL HEALTH, OFFERING CRITICAL WORKFORCE DEVELOPMENT, COUNSELING AND LEGAL ADVOCACY PROGRAMS, AND LIFE-SAVING RESOURCES TO PEOPLE LIVING WITH HIV AND AIDS. THESE SERVICES GIVE PEOPLE THE TOOLS THEY NEED TO GET ON THE PATH TOWARDS GOOD HEALTH, STABILITY, AND SUCCESS. WE HAVE BEEN THROUGH A LOT THIS LAST YEAR BUT ONCE AGAIN PRC HAS BEEN WITH US EVERY STEP OF THE WAY.”

San Francisco Mayor London Breed

170 9th Street
San Francisco, CA 94103
415-777-0333
www.prcsf.org

 /positiveresource

 /prc_sf

 /prc-sf

 @prc_sf