



impact report 2019



DEAR FRIEND,

AS SAN FRANCISCO IS STRIVING TO BETTER SERVE ITS CITIZENS IN NEED, ORGANIZATIONS LIKE PRC REDUCE THE BARRIERS TO LIFE-CHANGING SERVICES AND PROGRAMS. OUR GOAL IS TO UPLIFT PEOPLE STRUGGLING TO HOLD BALANCE OR STABILITY BECAUSE OF CHALLENGES RELATED TO SUBSTANCE USE, MENTAL HEALTH, OR HIV/AIDS. WE DRAW UPON A RICH HISTORY OF SHOWING UP FOR THOSE IN NEED. WE'VE SEEN WHAT'S POSSIBLE, AND WE BELIEVE IN THE TREMENDOUS POTENTIAL OF OUR CLIENTS TO IMPROVE THEIR LIVES.

Stopping cycles of poverty, homelessness, and decline is no small feat, and—let's be real—there are no easy solutions. But we are taking bold steps and making critical progress.

Over 5,000 people sought our help last year—across mental health counseling, drug rehabilitation, housing support, health care access, and job reintegration—and you'll read about their individual and collective achievements in the following pages.

PRC's new Integrated Service Center at 170 9th Street is rooting and magnifying our work to connect health-challenged, low income and no income adults to the integrated social, legal, and health services they need to stabilize and elevate their lives.

Substance use, mental health, and HIV/AIDS affect all of us, regardless of place, identity, and affiliation. Yet health inequities are also clearly linked to historically-rooted social and economic isolation, policies of exclusion, and otherness. People experiencing homelessness in San Francisco are disproportionately LGBTQ (30% v. 14%) and African American (35% v. 6%) . While we've shrunk new HIV infections by nearly two-thirds in San Francisco over 10 years, 14% of new diagnoses are concentrated in homeless individuals. Where people live, learn, work and play affects their health risks and outcomes, and poverty is the number one risk factor for poor health.

So, we take action. PRC is linking health to income, housing, and community. We're integrating social and treatment services. With public and private partners, we're building stepped up systems of support that meet real people where they are, and we walk with them into the next level of stability and opportunity.

Our community is the impetus, rationale, and focus for our change. Following on the heels of PRC's double merger, it's been a period of growth, stretch, and transition. We wouldn't be here without our many supporters and partners, countless volunteers, dedicated staff, contributors, and ambassadors. Thank you! Together, we are creating change for San Francisco's most marginalized and vulnerable residents.

Onward,



Doug Browning
Board President



Brett Andrews
Chief Executive Officer



DOUG BROWNING



BRETT ANDREWS



“ PROVIDING A CONTINUUM OF CARE AND RESOURCES IN ONE LOCATION IS AN ESSENTIAL PART OF OUR EFFORTS TO HELP PEOPLE EXIT HOMELESSNESS AND TO CARE FOR THE CITY’S MOST VULNERABLE POPULATIONS. WE ARE PROUD TO BE PARTNERING WITH PRC, A LEADER IN THE COMMUNITY WHOSE EFFECTIVE, COMPREHENSIVE WRAP-AROUND SERVICES CONTINUE TO MAKE LASTING AND POSITIVE IMPACTS FOR THOSE MOST IN NEED. ”

London Breed, Mayor of San Francisco



Connecting the Dots:

Through a growing set of client-centered, evidence-based, and pragmatically designed services, PRC is interrupting the downward spiral, connecting people to hope and a ladder of resources.



From crisis care and stabilizing interventions to longer term rehabilitation and housing-focused solutions, PRC is lifting people up out of poverty and addiction, illness and stigma, homelessness and decline.

ACROSS 2018, PRC HELPED 5,419 PEOPLE:

STRENGTHEN

MENTAL AND PHYSICAL HEALTH

ACCESS

HEALTH CARE AND
HEALTH-RELATED SERVICES

ESTABLISH

AND GROW INCOME

STABILIZE

HOUSING

BUILD

COMMUNITY
AND CONNECTION



**PRC
SERVICES**

**WORKFORCE
DEVELOPMENT
PERMANENT
SUPPORTIVE
HOUSING
TRANSITIONAL
CO-OP LIVING**

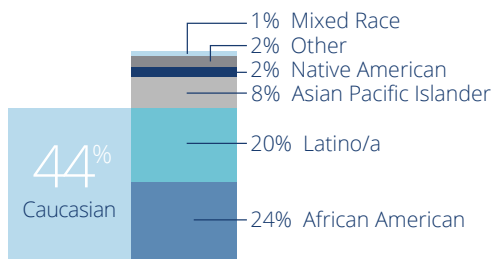
ELEVATING LIVES

PRC clients generate \$4 for every \$1 we spend on employment readiness, training, placement, and retention. Those who were recently employed increase income by 200%.

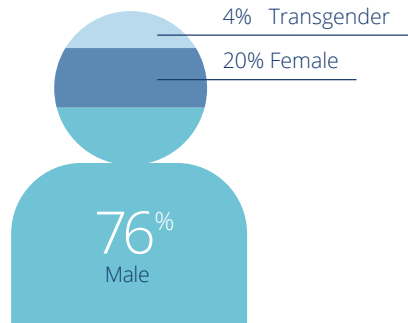
**LEGAL ADVOCACY
SUBSTANCE USE
AND MENTAL
HEALTH
RESIDENTIAL
TREATMENT**

DEMOGRAPHICS WHO WE SERVE

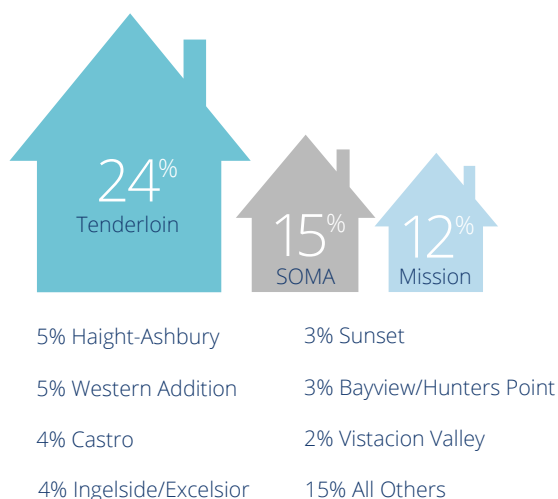
RACE/ETHNICITY



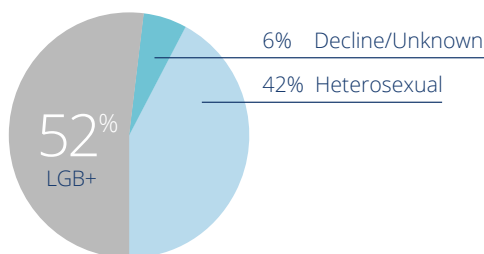
GENDER



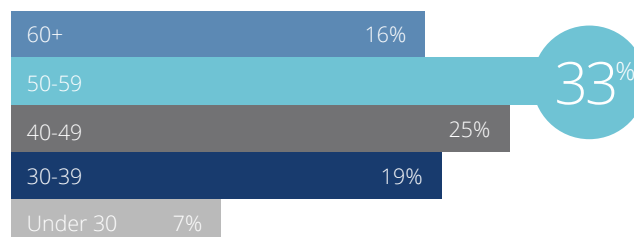
NEIGHBORHOODS



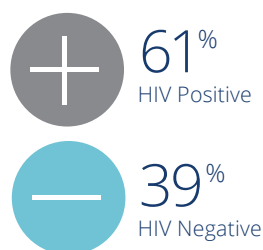
SEXUAL ORIENTATION



AGE



HIV STATUS



INCOME



STABILIZING LIVES

We spend \$1,300 to help a person too ill or disabled to work stabilize her life with public benefit awards totaling \$21,000. The stability results in a \$28,000 net reduction in public expenditures on health and crisis services.

**HOMELESS
NAVIGATION
CENTER**
INPATIENT DETOX
**EMERGENCY
FINANCIAL
ASSISTANCE**

SAVING LIVES

\$1 at Joe Healy Detox saves \$11 in local health and emergency service costs. More than 1 out of 3 people navigating through Hummingbird Place, among the City's most chronically homeless individuals, choose a path off the streets.

CLIENT STORIES

“AFTER MY 90-DAYS [OF RESIDENTIAL TREATMENT] AT ACCEPTANCE PLACE, I MOVED INTO A PRC BAKER PLACES CO-OP APARTMENT. WITHIN FOUR MONTHS I WAS WORKING PART-TIME, AND NOW A YEAR LATER I'VE FOUND FULL-TIME PERMANENT WORK. THE CO-OP PROVIDED ME SUPPORT AND COMMUNITY TO PICK THE PIECES OF MY LIFE UP.”

Client, Residential Treatment and Co-op Supported Living

“I CAME TO PRC IN CRISIS, HAVING JUST LOST MY JOB. I QUALIFIED FOR EMERGENCY FUNDS — A MONTH'S RENT TO SECURE MY HOUSING — AND WHEN I CONFIDED THAT MY HISTORY OF SUBSTANCE ABUSE WAS INTERFERING WITH MY ABILITY TO MAINTAIN EMPLOYMENT, PRC CONNECTED ME TO...COUNSELING WHILE MY EMPLOYMENT SPECIALIST HELPED ME FIND A BARISTA POSITION AT A PRIVATE CLUB. WITH THE SUPPORT OF PRC AND MY COUNSELOR, I AM CONFIDENT IN KEEPING THIS JOB.”

Client, Workforce Development and Emergency Financial Assistance

John

When John used crystal meth for the first time in 2001, he was a **successful marketing executive** who'd just been chosen to relocate cross country with his firm.

During the ten years of that followed, as his **drug use intensified**, he lost jobs, seroconverted, and became homeless. Although John saw himself traveling down a reckless path, it took an impactful **chance encounter with a fellow addict** for John to finally admit he needed help. He started to attend CMA meetings and John's sponsor referred him to PRC.

While living at Ferguson, John was connected with PRC's Legal Advocacy Program, working with an attorney to access and **stabilize his income** with SSDI. As his **sobriety** settled in and **confidence** grew, John went **back to work** as a consultant and progressively moved into **more independent housing**.

He also knows that he can rely on PRC's services **anytime he needs us**. Most recently in 2018, John reached out for help with the unexpected and mounting costs of prescription medications, and Emergency Financial Assistance helped him bridge the gap. Since 2013, John has much to be proud of: he has found sobriety, become part owner of a small business, sustained consistent housing, and gotten married. “Thanks to PRC, I've made a **new life**.”



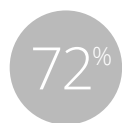
CRISIS CARE

WE TREAT EVERYONE WHO WALKS THROUGH OUR DOOR WITH RESPECT AND DIGNITY. ILLNESS IS NOT AN IDENTITY, AND DISEASE CAN BEFALL ANYONE. WITH PRC'S SUPPORT, CLIENTS MOVE FROM CRISIS INTO STABILITY, POSITIONING THEMSELVES TO EFFECTIVELY MANAGE THEIR HEALTH CONDITIONS.

JOE HEALY DETOX

PRC's behavioral health treatment programs pioneered the social rehabilitation model, established in 1964 under Baker Places. To stop people who are homeless from dying on the streets as a result of substance abuse, the Joe Healy Detox Center opened its doors in 2000. It remains a critical resource, offering a 21-day medically-managed stay for up to 28 people at a time. **In 2018, 506 people accessed PRC's detox services.**

AT EXIT:



made progress on treatment goals.



exited to more stable, next step housing, i.e. a treatment or support program, living with family, or living on one's own.

SIX MONTHS LATER PARTICIPANTS REPORTED:

INCREASED EMPLOYMENT
from 8% to 20%

DECREASED HOMELESSNESS
from 41% to 20% living in a shelter or on the street

DECREASED ALCOHOL USE AND/OR SUBSTANCE USE
Alcohol use down 89% to 64%.
Substance use down 67% to 36%.



Connecting the Dots:

In 2018, PRC applied our more holistic, behavioral health informed approaches in two new settings. Inside Joe Healy Detox we introduced HIV and hepatitis testing along with prevention education and evidence-based interventions through a U.S. Department of Health Services' Substance Abuse and Mental Health Services Administration funded initiative. Second, to accelerate housing placement and stability among high risk HIV positive individuals, we're piloting Integrative Health Analysis (IHA) — a Special Project of National Significance (SPNS) funded through the U.S. Department of Health and Human Services' Health Resources and Services Administration.

Why? 14% of San Francisco's new HIV diagnoses in 2018 occurred among homeless individuals, nearly 3 times the national standard; and homelessness or housing instability is a substantial contributor to HIV transmission and fatality risks.

“ PRC IS TACKLING ISSUES THAT MATTER TO SAN FRANCISCO, AND CREATING NEW AND BETTER PATHS FOR ADULTS STRUGGLING ON OUR STREETS. WE GIVE TO PRC BECAUSE THE ORGANIZATION IS EFFECTIVE, COMPASSIONATE, AND EVERY CONTRIBUTED DOLLAR REALLY COUNTS.”

Laura Powell, PRC ElevateSF Cabinet Member and Contributor



HUMMINGBIRD PLACE NAVIGATION CENTER

The only homelessness navigation center in San Francisco staffed by behavioral and mental health workers, Hummingbird Place is a key innovation for the most frequent users of San Francisco's crisis and inpatient emergency services. Operated by PRC and located on the Zuckerberg San Francisco General Hospital campus, Hummingbird is a low-barrier alternative to homelessness, addiction, and unmanaged mental illness. It provides day drop-in services and overnight beds to help chronically homeless individuals — with acute psychiatric and substance use histories — see and choose a path forward off the streets. It's a safe space to rest, shower, do laundry, and build trust in necessary care systems, like shelter or treatment, for those who are most disconnected and hardest to reach and serve.

Successfully **transitioning 36%** of overnight residents to more stable, next step housing across its first 12-months, the San Francisco Department of Public Health funded program **grew from 15 beds** in 2017 to **29 beds** in 2019.

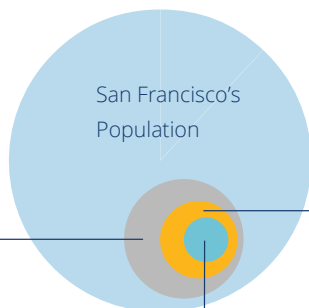
EMERGENCY FINANCIAL ASSISTANCE

PRC's Emergency Financial Assistance Program distributes **emergency grants** to help HIV-positive, low income individuals **overcome economic and housing barriers** to care. Eviction Prevention & Housing Stabilization offers up to \$1,500 per year in back rent or move-in expenses. Emergency Support provides up to \$500 per year to meet critical financial needs, like paying an unexpected utility bill, affording prescription medications, or keeping the phone turned on.

Across 2018, 1,882 clients living with HIV accessed \$976,565 in emergency funds. Nearly three-quarters sought help with housing expenses, and 90 days after the emergency fund intervention, 75% remained stably housed.

Housing stability is a key contributor to healthcare access, keeping viral loads low, and preventing new HIV infections.

San Francisco is home to 12% [16,000+] of California's population living with HIV.



Over 75% [12,000+] earn less than 50% of area median income and are at high risk of homelessness.

33% of these [4,000] are disabled by HIV, unable to work, and have depleted their savings — surviving on less than \$900 per month in social security disability benefits.

CLIENT STORIES

Liliana

Seeking refuge and a path forward following her HIV diagnosis, Liliana came to the US from Colombia in 2010. She found work in housekeeping, but the manual labor was physically exhausting and rarely provided enough money to pay her bills.

Connected to PRC's Workforce Development Program, Liliana was **encouraged to enroll** in English as a Second Language (ESL) classes, and she participated in **Next Step Computer Skills Training**. Her employment specialist helped her craft a **resume** showcasing her volunteer experience and course work. With increasing **confidence** in herself, Liliana was coached through interviews for jobs that **merged her skills with her passion** to help others.

With PRC's guidance and her asylum status secured, Liliana has found increasingly **gratifying and stabilizing work** with the City of San Francisco, The Arc San Francisco, and most recently Homebridge. As she continues to pursue and **achieve her potential** – improving her **health**, building economic **security**, and pursuing her **dreams** amid a supportive **community** — PRC will be here to change the landscape of opportunity for the most vulnerable members of our community.

“PRC TOOK AWAY THE FEAR I HAD ABOUT THE PROCESS AND CHALLENGES OF FILING FOR PERMANENT DISABILITY. I WAS AWARDED SSDI (DISABILITY INCOME) ON MY FIRST APPLICATION FOR WHICH I AM TRULY GRATEFUL. NOW I CAN FOCUS ON MY HEALTH AND WORRY LESS ABOUT MONEY.”

Client, Legal Advocacy

“PRC HELPED ME TO BOTH FIND WORK AND APPLY TO THE DEPARTMENT OF REHABILITATION TO OFFSET MY SCHOOL COSTS. AFTER GETTING SET UP WITH ADAP TO COVER MY PRESCRIPTION COSTS, I NEEDED MORE FLEXIBLE WORK TO CONTINUE MY MASTER'S DEGREE. I DID IT, AND I'VE NOW HAD MY OWN SUCCESSFUL BUSINESS FOR OVER 3 YEARS!”

Client, Workforce Development and Legal Advocacy





STABILIZING SERVICES

AS FIERCE ALLIES AND CONNECTORS, WE WORK TIRELESSLY TO HELP OUR CLIENTS RECLAIM THEIR POTENTIAL. PARTICIPANTS LEARN TO PLAY AN ACTIVE ROLE IN THEIR HEALTH AND WELLNESS AND TAKE RESPONSIBILITY FOR MAKING THE DISCOVERIES AND DECISIONS THAT WILL ALLOW FOR THE GREATEST DEGREE OF GROWTH AND PROGRESS.



Connecting the Dots:

PRC launched a new initiative—the SSI Advocacy Trust Pilot—to lift up the most profoundly disconnected adults in San Francisco other systems have not been capable of supporting. This partnership with Bay Area Legal Aid and the San Francisco Human Services Agency seeded by Tipping Point Community—exemplifies how PRC is leveraging its new breadth to break down barriers to care and offer new paths to long-term wellness for people struggling at the intersection of poverty, stigma, and ill-health.

LEGAL ADVOCACY

PRC connects vulnerable individuals — many of whom have historically been wrongfully denied public benefits they are eligible to receive — to baseline income stability and healthcare services, basic building blocks of health.

Across 2018:

- **1,913** vulnerable low income, homeless, or HIV+ individuals gained direct legal representation, advocacy, and government benefits consultations through PRC's Healthcare and Benefits Advocacy Programs.
- **478** uninsured or underinsured individuals secured access to quality health care and services.
- **230** Notices of Award for individuals' supplemental security and disability benefits resulted in \$3,205,638 in retroactive award payments as well as \$239,912 in ongoing monthly income for vulnerable San Franciscans.
- Legal Advocacy boasts a **94%** win rate for all adjudicated cases.

Legal services are also expanding. Through the SSI Advocacy Trust Pilot, PRC is now visiting homeless shelters, navigation centers, and community access points to connect with people who are homeless or at risk of homelessness, and we've successfully opened a new door to stabilizing income for 60 people in less than a year. In the Trust Pilot, just like PRC's longstanding Legal Advocacy services, attorneys represent individuals eligible to access federal disability and healthcare benefits in their initial applications as well as in subsequent appeals.

RESIDENTIAL BEHAVIORAL HEALTH TREATMENT PROGRAMS

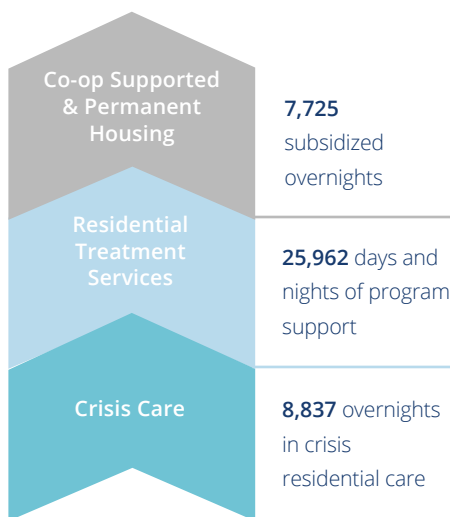
PRC Baker Places offers 88 treatment beds across seven service-rich, home-like environments to help people overcome substance use, mental illness, and co-occurring or dual disorders. Inside each licensed program residents participate in counseling to identify issues that may have placed them at risk in the past. They develop support systems, build independent living skills, and practice self-regulation. One site provides mental health crisis stabilization services for up to 30 days. Two sites focus primarily on substance-use, with competencies in servicing LGBTQ individuals as well as people living with HIV/AIDS for up to a 90-day stay. Four programs prioritize mental health treatment for up to 90 days, rehabilitating clients and transitioning them to stable housing and outpatient treatment.

In 2018, 438 adults accessed PRC's residential substance use and mental health treatment programs. Two-thirds made substantial progress against their treatment goals and a stable exit.

AS A RESULT OF PRC'S CONTINUUM OF RESIDENTIAL SUBSTANCE ABUSE AND MENTAL HEALTH SERVICES:

396 adults eliminated or significantly reduced substance use

408 adults demonstrated improved mental health and daily functioning



“AN IMPORTANT PART OF KAISER PERMANENTE'S MISSION IS TO IMPROVE THE HEALTH OF THE COMMUNITIES WE SERVE. WE DO THAT BY PARTNERING WITH OUTSTANDING NON-PROFIT ORGANIZATIONS LIKE PRC THAT ADDRESS THE SOCIAL DETERMINANTS OF HEALTH FOR THOUSANDS OF PEOPLE EACH YEAR WHO STRUGGLE WITH DISABLING MENTAL ILLNESS, SUBSTANCE USE, AND HIV/AIDS.”

Jim Illig, Kaiser Permanente
Community Benefit Manager





ELEVATION SERVICES

WITH PRC'S SUPPORT, CLIENTS MOVE FROM CRISIS TO STABILITY, POSITIONING THEMSELVES TO EFFECTIVELY MANAGE THEIR HEALTH CONDITIONS — AND TO THRIVE.



PRC's Workforce Development is nationally recognized as a model community rehabilitation program for people living with HIV and accredited by the Commission on Accreditation of Rehabilitation Facilities (CARF).



Program Partners

H+R Block	Target
Whole Foods	Starbucks
Blue Apron	Hyatt
Genentech	Uber
Alaska Airlines	Salesforce
Apple	Old Navy

WORKFORCE DEVELOPMENT

PRC helps people with mental and physical disabilities get back to work at more than twice the statewide average. We offer a full spectrum of individualized coaching and support services including vocational assessment, rehabilitation, career navigation, counseling, and job search assistance with clear results.

In 2018, PRC helped 653 adults with mental health or physical disabilities **reinvigorate their livelihoods, independence, and self-esteem.** Job seekers with recent work histories increase their income by more than 200%. On average, PRC's clients earn \$21.71 — that's 145% of San Francisco's minimum wage. They're also entering and re-entering the workforce across a variety of industries, most frequently retail, nonprofit, healthcare, government, and hospitality. In 2018, participants earned over \$1,000,000 in wages through PRC's job placements.

PRC also equips job-seekers through **two accredited trainings: the Next Step Computer Certificate Program** establishes up-to-date computer skills across 90 hours of hands-on learning. The **Clerical Skills Certificate Program** develops administrative and occupational facility across 50-hours of pre-employment skill-building like answering and routing calls and using office machinery. Of 94 enrollees in 2018, 92% earned Certificates, and half of active job seekers found living wage employment within one year, increasing their annual income almost 300%.



The new Integrated Service Center includes a **24-user** computer lab, an exciting upgrade in technology and more than twice our previous computer lab's capacity. The result? New opportunities for clients to learn skills and increase employability.

The lab is right next door to four **self-serve computer terminals**

for client-led job searching and PRC's new **12-student learning center**, for financial literacy classes, retirement planning clinics, interview skills workshops, and the like. Under one roof we can open more doors to stabilizing and increasing income.

TRANSITIONAL CO-OP LIVING & PERMANENT SUPPORTIVE HOUSING

In over 20 PRC-managed co-ops across the City, PRC helps people reclaim their path and potential, pairing time-limited rental subsidies with case management. Co-ops are shared multi-bedroom apartments, where graduates of substance use and mental health treatment programs can build up confidence making healthy choices, practice independent living, and take their next steps into health. Connecting residents to vocational, educational, social service, and recreational resources, PRC Co-op Supported Living helps people seize the opportunity to grow and thrive.

Given the Bay Area's high costs of living and dearth of affordable housing options, it's true that taking the next step into independent living and self-driven follow up care is increasingly difficult for co-op residents. Leaving San Francisco can mean leaving one's support network behind. Housing resources that keep people healthfully in community — including each of PRC's 111 Co-op Living beds — are critical.

IN 2018, 179 PEOPLE ACCESSED PRC'S CO-OP SUPPORTED LIVING PROGRAM. NINE OUT OF TEN MADE A POSITIVE EXIT.

The Odyssey House is a permanent and supportive home for ten African-American adults with extensive histories of institutionalization, homelessness, mental illness, and substance use. Unique in San Francisco, PRC's skilled, compassionate staff are onsite 24 hours a day. Residents build community linkages and maximize self-sufficiency.

At PRC, we know that some people need a little help and some people need a lot. All are valued members of our community. PRC is always a place where you can feel safe and welcome.



IMPROVING OUR CONTINUUM OF SOLUTIONS

An active voice and collaborator, PRC is on the frontlines advocating for constituent needs and upending inequities in health care needs, social supports, and outcomes resulting from historical and discriminatory policies and practices. **We work in concert with over 50 public and private partners**, fighting for social and economic justice among health challenged, low-income, and disabled populations. Improving access, quantity, and quality of needed treatment services is a priority. Addressing the nexus of poverty, stigma, discrimination, and isolation is key to more positive health outcomes. PRC continues to lead conversations about San Francisco's Getting to Zero Initiative—a UNAIDS inspired commitment to zero new HIV infections, zero HIV deaths, and zero HIV stigma by 2020—and champion all of our clients' needs.

175 former clients and community members stand side by side with us through community-building and volunteer activities year round. 571 health workers, providers, and consumers learned how to better access critical health programs through technical assistance and training.

FINANCIAL POSITION

YEAR END 2018

STATEMENT OF FINANCIAL POSITION

ASSETS 2018

CURRENT ASSETS

Cash and cash equivalents	2,395,350
Cash held by others	9,200
Accounts receivable, net	3,408,304
Government grants receivable	455,479
Pledges and grants receivable	137,543
Prepaid expenses	265,454
Restricted cash	48,107
Total current assets	6,719,437

OTHER ASSETS

Investments	1,621,596
Property and equipment, net	18,607,931
Intangibles, net	615,477
Deposit	592,300
Total assets	28,156,741

LIABILITIES AND NET ASSETS

CURRENT LIABILITIES

Accounts payable and accrued expenses	2,577,740
Accrued compensation	841,598
Deferred revenue	1,909,507
Unemployment trust	9,200
Current portion of capital leases	41,136
Current portion of long-term debt	34,976
Line of credit	-
Total current liabilities	5,414,157

Accrued interest	793,325
Deferred revenue, net of current portion	1,618,618
Deferred rent	984,104
Capital leases, net of current portion	11,767
Long-term debt, net of current	1,997,462
Other liabilities	196,548
Total liabilities	11,015,981

NET ASSETS

Without donor restrictions	17,140,760
With donor restrictions	-
Total net assets	17,140,760
Total liabilities and net assets	28,156,741

STATEMENT OF ACTIVITIES

OPERATING ACTIVITIES 2018

REVENUE AND SUPPORT

Government awards	20,628,914
Program fees	1,056,641
Foundation and corporate grants	566,330
Contributions	511,873
Fundraising event, net	399,676
Client rent	346,391
Other	242,368
Total revenue and support	23,752,193

EXPENSES

Program	19,620,130
Management and general	2,664,141
Fundraising	1,339,345
Total expenses	23,623,616
Change in net assets from operations	128,577

NONOPERATING ACTIVITIES

Investment loss, net	(132,038)
----------------------	-----------

CHANGE IN NET ASSETS (3,461)

Net assets, beginning of year	17,144,221
Net assets, end of year	17,140,760

These 2018 financials reflect the audit report for PRC (Positive Resource Center) which is comprised of consolidated financial statements that include a financial accounting of Baker Places, Inc. (BP), a subsidiary of PRC. As PRC is a sole corporate member of BP due to having a controlling financial interest in BP, FASB ASC 958-810-25-2 requires that PRC consolidate financials with BP in order to remain in accordance with U.S GAAP. However, PRC and BP remain separate 501(c)(3) organizations with separate 990 filings.

“ THE WORK OF PRC IS VITAL TO ADDRESSING THE NEEDS OF SOME OF OUR MOST VULNERABLE NEIGHBORS. I AM PROUD TO SUPPORT PRC’S PROGRAMS HELPING PEOPLE IN THE BAY AREA IMPACTED BY HIV/AIDS, SUBSTANCE USE OR MENTAL HEALTH CHALLENGES TO OVERCOME STIGMA AND OTHER SOCIAL BARRIERS TO IMPROVED HEALTH. ”

Ryan McKeel, PRC Board Member
Senior Director Public Affairs, Gilead Sciences, Inc.

“ I SUPPORT PRC BECAUSE OF ITS IMPACT AND ITS FIERCE ADVOCACY FOR THE VISIBLY-INVISIBLE AND THE MOST VULNERABLE MEMBERS OF OUR COMMUNITY. ITS UNIQUE MODEL DELIVERS BOTH TRIAGE SUPPORT FOR INDIVIDUAL STABILIZATION AND A CONTINUUM OF CARE FOR LONG-TERM SUCCESS THAT IS GROUNDED IN A RICH HISTORY OF HELPING THOSE WITH HIV/AIDS, SUBSTANCE ABUSE, AND MENTAL HEALTH ISSUES GAIN ACCESS TO CRITICAL RESOURCES THAT TRANSFORM LIVES. TED AND I BELIEVE IN PRC’S VISION AND ITS ABILITY TO CONTINUE INNOVATING AND IMPLEMENTING PROGRAMS THAT ADDRESS THE COMMUNITY’S CURRENT AND FUTURE CHALLENGES. ”

Derek Barnes, Horizons Foundation
Board Member and g-dii Enterprises COO/CTO

2018 DONORS

Our profoundest gratitude to each and every PRC contributor. Our work is only possible with the generosity and breadth of support recognized here. Please note this list reflects funding, pledges, and contributions received from **January 1, 2018 through December 31, 2018**. We apologize in advance for any inadvertent errors. Thank you for your support!

\$5,000,000+

San Francisco Department of Public Health, Behavioral Health Services, Mental Health Program

\$2,500,000+

San Francisco Department of Public Health, Behavioral Health Services, Substance Use Program

\$1,000,000+

San Francisco Department of Public Health, Behavioral Health Services
San Francisco Department of Public Health, General Health, Behavioral Health Center
San Francisco Department of Public Health, Housing and Urban Health
San Francisco Department of Public Health, Ryan White Part A

\$250,000+

San Francisco Department of Public Health
San Francisco Department of Public Health, Technology Modernization Initiative
San Francisco Department of Public Health, HIV Health Services
Tipping Point Community
U.S. Department of Health and Human Services, Substance Abuse and Mental Health Services
U.S. Department of Health and Human Services, Health Resources and Services Administration
U.S. Department of Veterans Residential Mental Health Program

\$100,000+

Bare Chest Calendar 2019
Colliers International
Gensler*
Gilead Sciences, Inc.
Estate of Sylvester James, Queen of Disco
Mayor’s Office of Housing and Community Development
Morgan Lewis & Bockius LLP**
Pillsbury Winthrop Shaw Pittman*
San Francisco Department of Public Health
San Francisco Health Network
Health Plan, Behavioral Health Services
San Francisco Office of Economic and Workforce Development

\$50,000+

AIDS Walk San Francisco Foundation
California Department of Rehabilitation
GRGR West, Real Bad
Northern California Community Loan Fund,
Nonprofit Stabilization Fund, a program of the San Francisco Office of Economic and Workforce Development
Kent M. Roger and Daniel S. Hancock

\$25,000+

AB Software/Big Muscle
Brett Andrews
Fifth Generation Inc./
Tito’s Handmade Vodka**
Genentech Foundation
Kaiser Permanente
Revel Architecture & Design*
Target Corporation
Wells Fargo Foundation
Zendesk*

\$10,000+

AIDS United
Anonymous Individual

AT&T

Bon Appetit Management Company**

Douglas Browning

Catholic Charities

Commercial Construction &

Improvements, Inc.*

Community Thrift Store

Costco Wholesale Corporation

CRJ, Inc.*

DBI Beverage Distributor/

Golden Brands/Miller

Anice Flesh

Folsom Street Events

Heffernan Insurance Brokers

James C. Hormel & Michael Nguyen

Lazy Bear Fund Inc.

MEP Engineering*

Gary Nichols

Laura Powell and Chuck Byce

Gayle Roberts

SF Eagle Bar

The Sundance Association for

Country-Western Dancing

Joseph Tuohy

WHM Creative*

\$1,000+

440 Castro Bar
Academy of Friends
America’s Best Local Charities
Warren E. Anderson
Mark Andrews
Anonymous Donor-advised
Vanguard Charitable Gift
Apple - Employee Match
Randy Arnold
The Benevity Community Impact Fund
Nikki Bi
Michael Bien and Jane Kahn
The Bolt
Broadway Cares/Equity Fights AIDS
Jared Brown
Collin Burry and Milko Encinas
California Department of
Public Health, Office of AIDS
Charles Schwab
Karl Christiansen
Compass
Lucius Conrad and Jeffrey Stone
Estate of Lawrence H. Cook
Robert Cotterman and Robert Giljum
Travis Creston Little
Justin Dauterman
David Perry & Associates
Tom DiRenzo and Andrew Belschner
Robert Dockendorff
Richard Dupree
EACH Foundation
Eli & Mae Rosen Foundation, Inc.
Russell Elmer
Excelerate Foundation
Patrick Finger
John T. Fostel
Gardella & Gardella, APC
Golden Gate Guards, Inc.,
Golden Dileaux Awards
Google
Paul Grippardi and Kevin Bentley
Larry and Norman Gunn
Dixon Head, Jr.
IBM: Employee Giving
Janssen
Scott Johnson
Scott Justus and Michael Shields
Ross Kalmin
Charley Kearns and Frank Ching
Gail Kendall
Neil Lang and Joseph Pessa, Jr.

The Larry and Carie Haimovitch
Charitable Fund
Leslie Family Foundation
Levi Strauss & Company
Levi Strauss Foundation
David Losso
Jawn Marques
Bill and Tim Matheson
Valerie Mc Morrow
William McCormick
Metropolitan Lounge Inc. / Lookout
Mosaic Event Management
Demetri Moshoyannis and Joshua Sparks
Michael Murphy
MZA Events, Inc.
Mark Nornhold
OfficeMorph**
Andrew Paxton
Thomas Peterson
PG&E
Kenneth Poudrier and Joe Freund
Powerhouse
Ken Prag
Quest Diagnostics
R. Kassman Purveyor of Fine Pianos
Thomas Raffin
Karen Ratliff and David Armstrong
Jacquelyn Rich
Larry Rich
The Richmond/Ermet Aid Foundation,
Songs for No Reason
Paul Saccone and Ryan Knight
Donna Sachet
Alber Saleh
Adrian Serone
SF LGBT Pride Celebration Committee, Inc.
Quentin Shaw
Sisters of Perpetual Indulgence, Inc.,
Project Nunway
Michael Smith
Square Inc.
Sterling Bank & Trust
Sweat Tracker
Thomas Tarnowski
Timothy Tierney
Mark Troy
UBS Donor Advised Fund
Umpqua Bank
Tim Valdivia
Venable Foundation, Inc.
Walgreens
Weatherspoon Charitable Foundation
Wells Fargo Community Support Campaign
Thomas Whalen
David Williams
Scott Williams and Scott Walton

\$500+

Stephen Adams
Anonymous Individual
Bank of the West
Race Bannon
Derek Barnes and Ted Hiscox
Kevin Bean and Michael Madrigal
The Bednarski-Johnson Family
Charitable Fund
Pat and Paul Belotti
Blow Buddies
Timothy Bogan
Russell Bono
Alden and Marianne Briscoe
Timothy Brouillette
Gerald Cain
James Carlson
Charitable Adult Rides & Services, Inc.,
Clorox Employee Match
Jorge Covarrubias
David Cumpston and Ney Nascimento
Jay David
Doucet Productions LLC
Daniel Drummer
Susan Fahey
Adam Felson
Neil Figurelli
Edward Garcia and Stephan Chmielewski
Todd Garrison
Robert Gibson
Google Employee Match
Gregory Herek and John Dynis
Andrew Hirst

Horizons Foundation
Todd Hosfelt and Louis Schump
Gregory Johnson and Natanya Bednarski
Nadir Joshua
Stuart Kent and Mark Pellegrino
Cynthia and T. Wayne Lawrence
Mark Leno
Levi Strauss & Co. AIDS Action Group
Russ Lorenson
Edward Low
Darrin Martin
Dave McCrory
Katie McQuade
Paul Menghetti
Gavin Middleton
Paul Moffett
Roger Mohamed and Jeremy Doughan
Mr. S Leather Co., Inc.
Douglas Mylcraine
Jerico, Jerry, Jordan and
Letty Padallan and Jay Luc
Zachary Papilion
Christopher and Enrique Novoa Payne
Hayden Reynolds
David Rich
Michael Richter
Jerry Roberts
Roger Royse
Michael Runner
Mark Salimbene
Albert Smith
Steamworks Baths - Berkeley
Lydia Stroup
Art Taylor
Carlo Tonini
Truth Initiative
Patricia Tuohy
Scott Turner
U.S. Charitable Gift Trust
Will Victoria
Gary Virginia
Jennifer Wedge
Dan Wolf
Dee Yavor
Ingu Yun
Jeff Zimman and Ken Ruebush

\$250+

Sheila Aharoni
Elizabeth Allin
Anonymous Employee, United Way
California Capital Region
Anonymous Microsoft Employee
Anonymous Wells Fargo Employee
Carl Bailey
Banks-Rubashkin Donor-advised
Fidelity Charitable Gift Fund,
Joseph Bavaresco and Rick Kawala
Gerald Becerra
Joseph and Joyce Behar,
donor-advised gift from
the Jewish Community Federation
Katharine Berg and Shane O'Connor
Jacqueline Bishop
Joseph Bolmarcich
Jason Brock
William Bulkley
Paul Burke
Century Club of California
Jonathan Chang
Will Charlton
Andrew Chen
Deborah Coleman
Dorothy and Richard Compeau
Romwald Connolly and Desmond Morgan
Steve Delavan
John Dickens
Terrance Evans
David Fagundes
Beth Feingold
David Fix
Wayne Forester
Fraenkel Gallery
Bryant Francis
Duncan Fuller and Timothy Shea
Patrick Gonzales and Christopher
Panarites
Phillip Gosney
Sarah Harbin
Harveys

Kenneth Henderson
Richard Hoffman
J. Mark Jenkins
John Jensen
Andreas Kastilani
Max Killen
Chris Knight
Keith Koller
Billy Lemon
Levi Strauss & Co. Matching Gifts
Patricia Liming
Donny Lobree
Kathie Lowry
Josh Lundell
Jason Macario
Arthur Mainster
Jeffery Maki
Derek Mantor
John Marino-Deabler
Marvin Morris
Ron Morrison
Alex Nellas
David Newcomb
Jim Oerther
Gary Osten and Ralph Torrez
David Pearson
Tricia Piper-Bennett
Michael Proctor and Eric Bernier
Joseph Ramirez-Forcier
Mike Ramsay
Carl Ranheim
Ghezal Raouf
Jorge Rivas
Shannon Rosales
Stephen Rossi
Kaushik Roy
Peter Ruiz
Mykul Saijoo
James Saliba
San Francisco Waldorf High School
Trey Sheldon
Gary Shrieves
Thomas Skidmore
Dee Spencer
Edward Steinforth
James Stokes and Michael Tabib
Don Suyeyasu
Michael Tate
The Midnight Sun
Theatre Rhinoceros
Laura Thomas
Julia and Sam Thoron
Judy Tomlins
Jeffrey Towns
Grant Travis
L. Julius Turman
UnitedHealth Group: Employee Giving
Miguel Valencia
John Vlahides
Morgan Von Rueden
Daryl Walker and Jim Bracken
The Walt Disney Company Foundation
Donald Wanamaker
Tim Webster
Jim Wegman and Kevin Monhollen
Woodward Family Foundation
Alan Yue
Chris Zerlaut

\$100+

Andrea Ach
Christian Ach
Stewart Allen and Thomas Pope
Bernard Alter
Jack Alvenus
AmazonSmile Foundation
American Automobile Association
Charles Anderson
James Anderson
Pamela Anderson
Anonymous Bank of America Employee
Anonymous Liberty Mutual Employee
Dimitrios Antos
Scott Arai
Curtis Bain
Michael Bankert
Kevin Barry
Andrew Bartfield
Sandra M. Barychewsky
Mark Baumbach

William Beason
David Beery and Norm Abramson
Darwin Bell
Arnaud Berlioux
Gene Bidwell
William Bir
Howard Bloom
Susan Boone
Zoe Borkowski
Fred Bothe
Walter Bowman
Cicero Braganca
Scott Brignoni
Eric Brouch
Julie Brown
Louis Bryan
Ken Buchmann
Budding Artist Foundation
Vincent Calvarese
Greg Carey
Frank Castaldini
William Caston
Joseph Catanzarita
Brenden Chadwick
Mario Champagne
Yvonne Chan
Isaac Chaput
Barry Chown
Eric Collier
Luoi Conde
James Connor
Bill Coppock
Lupita Cortez
Jennifer Dahlgren
Anna Damiani
Marques Daniels
Camden Davis
Portia Davis
Travis Dawson
Daniel Decesare
Michael Decker
Danielle Delves
Richard Devoll
Brian Dingman
Henry Doering
Jonathan Dolan
Thomas Doran
Paula Easton
James Edwards
Michael England
Richard Ennis
eScrip
Lori Espinosa
Amalia Evans
Caroline Everts
John Falcon
Nino Faleo
Eduardo Feliz
Robert Felkins
Martin Fernandez
Glenn Finch
Eric Fischer
Manuel Fishman
Hollis Fleischer
Jared Fleming
Tom Fleming
Michael Foley
Karen and Roger Ford
Hunter Fox
Benji Francois
Mark Franz
Martin Freas
Evan Fried
James and Nancy Gallagher
Gartner, Inc.
Carson Gaspar
Russell Gaspard
Edward Gibbons
Jean Gibson
Jil Girvin
Patrick Goff
Joanna Goldstein
Sanjay Gujral
Bernard Gundy
Gerald Gutschmidt
Kipp Hamilton
Anna Hammond
Larry Hand
Andrew Harmon
Lee Harrington

Alvis Hendley	Frank Novicki and Camelin Blackstone	Dwayne Takeno	Lyle Beckman
Gloria Hernandez	Patricia Ochoa-Milanfar	Schulhoff Tam	Constance Belcher
George Hicks	Robert Orrizzi and Steve Fuehrer	Mark Tangard	Mark Bennett
Derik Hilliard	Meredith Orthwein	Ryan Tanner	Jason Bennett
Jane and Stanley Hirst	Esteban Ortiz	Jeremy Taylor	Kevin Bennett
Eric Hoepner	Mimi Osa	Robert Taylor	Stephen Jeremy Bergholdt
James Hogan	Jeff Ouellette	Maei Thomas	Mike Bernard
Richard Hollingsworth	Robert Owen	Kyle and Michael Thornton-Lamp	John Bernier
James Holloway	P.O. Plus Corporation	Stacey Threlkeld	Zak Berrachdi
Lance Holman	Comfort Pando	Michael Timineri	Frank Betancourt
Scott Holmes	Judy Paraventi	Arthur Tomaszewski	Robin Bier
Gordon Hom	Parker Guest House	Andrew Tompkins	Justin Bigelow
Stephen Huey	Scott Paxton	Kyle Tonazzi	Eli Blair
Elizabeth Hunt	Kevin Pedretti	Jhenevie Torrado	Jake Blecha
Stephen Hutcheon	Christopher Peila	Herbert Treger	Rita Bocanegra
Jaeden Hutchison	Nataly Perez	Marleen Troy	Stevin Bolden-Curry
Craig James and George Macaluso	Richard Perez	Lance Turcato	Larry Bongort and Douglas Shoemaker
Bethany and Mark Jensen	Thomas Pessa	Twin Peaks Tavern	William Borden III
Michael JohaneK	M and Charles Petrie	Twitter	Brian Bouchelle
James Johnson	Stuart Plunkett	United Airlines	James Boulware
Mark Johnson	Herbert Pohlman	Mark & Tina Valentine	Steven Bracco
Zane Johnston	David Polakovs	Danny Vendrell	Joe Bradley
Cleve Jones	Vicki Polster and Charles Cech	Nick and Thom Venegoni	Jeff Brand
Tailleur Jones-Brown	Rick Poppell	Henry Villareal	David Brashear
Joan Juster and Mark Mitchell	Frederick Preyer	Donald Wagda	Rich Braun
KD Kalfee	Rene Puliatti	Christopher Wan	Ken Braun
John Kardys	William Pung	Wiley Wang	Richard Brennan
Jeffrey Keeny	Ken Rackow	Bridgette Washington	Anil Bridgpal
Karen Kellenberger	Ralston Middle School	Paul Weikel	Jeffrey Broadhurst
Ashley Kenaga	David Randall	Larry White	Darryl Brooks
Aaron Kessinger	Alex Randolph	Brian Whitford	Danielle Brown
Josh Kew	Alexandria Ray	Don and Cyndy Wieland	Dennis Brown
Craig Keyes	Allen Register	JoAnn Williams	Gerard Brule
John King	Doug Reher and Brian Logan	Martyn Williams	Sally Ann Buchmann
Mark Kochevar	Cherylin Reyes	William Wilson	David Burr
James Kravitz	Michael Richeson	William Woerner	Ronald Bush
Robin Kubota	Steven Rickards	Wayne Woodyard	Rico Jens Buttermilch
Shawn Kyle Shaw	Rick Rives	Gregory Wu	Lazaro Cabrera
Richard Landry	Carole Robbins	Bradley Zaller	Brian Cacic
Jay Larson	Robert Robledo	Ronald Zamora and Andy Wibbels	Roberto Cafiero
Last Call Bar / Men's Room	Roccos Cafe	Bryan Zerbe	Tim Cahill
David Latina	Marco Rodriguez	Helen Zheng	David Camacho
John Lavaysse	Juana Rodriguez-Nieto		James Campbell
Matthew Lawrence	Nicole Roger	\$25+	Cody Campbell
Matthew Lawyer	Rotary Club of San Francisco Castro	Arthur Abad	Armando Campos
Lori Lefkowitz	Steve Roth	Michael Abell	Paul Candler
Heleno Leitao	Michael Rubinstein	Brian Accardo	Mark Carey
Beck Levin	Charles Rudd	Frank Adams	Noel and Ruelle Carstenson
Joshua Levine	James Ruga	Matt Adams	Tiffany Carubio
Jason Lew	Frank Ruggieri	James Adler	Apollo Cayabyab
Matt Lewis	Jack Ryder	Ali Aimaq	Xavier Caylor and Jeffery Doney
Richard Libby	Mark Ryle	Bashar Alabi	James Cercone
Manit Limlamai	Richard Sablatura	Michael Albert	Jason Chadderdon
Duane Lindberg	Kirk Salanga	Pascal Aldebert	Joshua Chaisson
Kevin Lisle	Evaristo Sandoval	Tony Alejandre	Shannon Chan
Angela Loeffler	Nina Sawant	Maria Alfaro	Shih Chang
Zeke Lopez and David Stickney	Michelle Schoen	Leslie Alford	Fannie Chao
Chris Lotspeich	Kerrie Schwartz	Leen Allaert	Richard Chapin
Mary Ludlam	John Sealander	Shena Allen	Chaps
Matt Lyle	Tim Seelig and Dan England	Grady Allison	Noris Chavarria
Janice Maffei	Bob Seifert	Alejandro Amaya	Quyen Chavez
Edward Mathews and Matthew Karabaic	Dennis Setlock	Kevin Anderson	Daniel Huggybear Cherry
Guillermo Mazier	Steven Seto	David Andrade	Alan Choy
Matthew McCabe and Charles Wilson	Neeraj Sharma	Robert Andrews	Perry Clark
Don and Darrell McCormick	Joshua Sheppard	Steve Andrews	Jeremy Clarke
Daniel McCormick	Toyozo Shimano	William Andrews	Matthew Clary
Katherine McGauhey	Benny Shum	Anonymous Donor, Network for Good	Uriel Clavijo
Charles McGuire	Silvio Silva	Margaret Ansay	Andrew Clifford
Ryan McPherson	David Silverman	James Aquitania	Megan Clinard
Michelle Meow	Ranjeev Singh	Sara Archie	Ryan Coate
Jacques Michaels	Richard Sizemore	Michael Armado	Alan Codd
Gordon Miller	William Smith	Carl Arnett	Nancy Coe
Michael Miller	Keith Smith	Stan Arnold	Patrick Coil
Charles Minehart	Melida Solorzano	Rich Austin	Chris Cole
Christian Mitchell	Joel Sona	Ziomara Aviles	Paul Colfer and Jon Gatto
Michael Monagle	Linda Spinner	Raquel B	Alfredo Colmenares
Nick Moore	John Stack	Tony Baca	Adam Conderman
Carlos Morales	Richard Stadtmiller and Patrick Miller	Julie Baclene	Josephine Conneely
Todd Mordick	Blu Stanley-Wedge	Charles Bailey	James Conway
Zain Morin	Bill Stanziani	Jocelyn Baird	Rachel Cook
Whitney Moses	Charles Stegman	Mary Jean Baker	Stephen Cooke
Fred Muhlheim	Leo Stegman	Chris Ballor	Salli Cordova
Hardy Mullennix	Perry Stephney	Lion Barnett	Jennifer Coronado
Paul Munro	Alan Stroik	Linda Barnett	Jesus Cortez
Patrick Murray	Taylor Sublett	John R Barrett	Sarah Coulter
Brian Mutert	Tina Suer	Theodora Barychewsky	Brie Cracker
Michael Myers	Andrew Sullivan	Unai Basterretxea	Cool Mint Creme
Cassandra Najarian	Eric Swartz	Jake Bauch	Shawn Crossley
John Newmeyer	Lyle Sweeney	Cray Bauxmont-Flynn	Stephen Crow
Derek Nixon	Diane Syrcle	Aaron Beardsley	Fred Cummins

Maria Curran
 Robert Cutbirth
 Caroline Dadd
 James Danieli
 Aaron Danzig
 Keith Davenport
 Barbara Davis
 Bryan Davis
 Paul Davis
 Rodney Dayley
 Kathleen de Leon
 Christian De Rosas
 Michael Deibert
 Gemma Demarco
 Dave Demos
 Jim Dercole
 Sanjay Devdas
 Doug Devine
 Kimberley Diaz
 Francis DiDonato
 Joseph Doherty
 Nick Donovan
 Adrian Dorantes
 Patrick Dougherty
 Richard Doyle
 Jeffery Drain
 Anne Dudley
 Doc Duhon
 Michael Dunning
 Melissa E.
 Robert Eakin
 Tina Easton
 Skip Edmunds
 Cody Elkin and John Sugrue
 Greg Elvander
 Travis Emick
 Ron Engert
 Jed Entin
 Angel Evangelista
 Donald Faas
 Brian Fahey
 Suzy Fahmy
 Rupert Farr
 William Farrell
 David Feinstein
 Susanna Fenstermacher
 Tina Filippi
 Jeni Finch
 Fitness SF Castro
 Tanika Fitzgerald
 Bradley Fitzhenry
 Ray Fontenot
 David Forbes
 Michelle Forshner
 Mary Ellen Fortini
 Warren Fourie
 Stephen Franco
 Andre Frech
 Mark Fulwiler
 Jonathan Funk
 Sonia Funkenbusch
 Alvin Furumoto
 Regina Galarneau
 Stephen Galloway
 Steven and Michelle Garasky
 Matthew Garcia
 William Garlinghouse
 Stephen Gaschnard
 Steven Gaynes
 Sandra Geer
 Michael Georgopoulos
 Brian Gilis
 Cecille Gobel
 Deborah Gold
 Dana Goldman
 Victor Goldsstein
 Aurélie Golfier-Kockx
 Richard Gomes
 Robert Gomez
 Jeffrey Gong
 Thomas Gonzalez
 Yvonne Gonzalez
 Gareth Gooch
 Zachary Gordin
 Alan Goy
 David Grabstald
 Leslie Graham
 John Graham
 Autumn Gray
 Terry Green

Rebekah Green
 Barbara Greenspan
 Lee Griffin
 Melanie Grigsby
 Anthony Grisafi
 Susan Grossman
 Jill Guenza
 Joel Gust
 David Gutierrez
 Kimberly Gutierrez
 Mariano Guzman
 Stacy Hall
 Zurii Hall
 Gerald Hamblin
 Joel Hamscher
 Jon Hanson
 Kenneth Harper
 Susanne Harris
 David Harris
 Rusty Harris-Bishop
 Tony Hart
 Paul Harvey
 Barbara Hatchel
 Douglas Hayward
 Anthony Hecht
 Brianna Heggeseht
 Paul Hempel
 Baruch Porras Hernandez
 Gabriel Hernandez
 Zachary Herries
 Dan Hershkowitz
 Gregory Hild
 Sara Hileman
 Gail Hobbs
 Joshua Hoffer
 Dennis Holding
 Verle Holland
 Marylynne Holman
 Michael Holth
 Jared Holtsberry
 Qizhou Hong
 Gary Hopkins
 William Hoshaw
 Jason Hough
 Chris Houston
 Raymond Howe
 Shannon Hroch
 Anthony Hua
 Curtis Huberman
 John Hughes
 Anthony Hydron
 David Hyman
 Alisa Iloreta
 Dustin Izatt
 Kair Jackson
 Ralph and Bob Jaeger
 Brian James
 Jim James
 Anthony Jasinski
 Mark Jawgiel
 Lee Jellema
 Bill Jennings
 Paula Jensen
 Michelle Jester
 Orlando Jimenez
 Huiyan Jin
 Craig Johnson
 Gene Johnson
 Jayson Johnson
 Ryan Johnson
 Jon Jones
 Brett Jones
 Kevin Junious
 Mark Katzenberger
 Steve Kaye
 Thomas Kelem
 Barbara Keller
 Donald Kelley and Susan Getman
 John Kelly
 Nicole Kendall
 Kate Kendall
 Lawrence Kenney
 Devesh Khatu
 Ben Kiker
 Jo Killen
 Kelly Kimball
 Max Kirkeberg and Gabriel Proo
 Barbara Kirkwood
 Jon Knott
 Loren Kollar

Amy Kong
 Matthew Konopka
 Martin Korinth
 Jeffrey Kosbie
 G. P. Paul Kowal
 Scott Kramer
 Sean Kramer
 Kimberly Krohn
 Ashish Kumar
 Winfield LaFontaine
 Cynthia Laliberte
 Brent Lammers
 Jouke H. Lanning
 Steve Larranaga
 Richard Latulippe
 Pamela Lawless
 Travis Leach
 Gombatista Leggio
 Loren Lemons
 Andrew Lenagham
 Steven Lerman
 Michael Lewis
 Donna Lim
 Piper Lind
 Aaron Lindsey
 Rick Little
 David Livingston
 Tomas Llorence
 Sherry Lockwood
 Stephen Long
 Hector Lopez
 Lauren Lopez
 Sandra Lopez
 Anthony Loverde
 David Lowe and Steven Murphy
 Gabriel Lowenkron
 Jenny Luc
 Anthony Lucas
 Frank Lucero
 Sharon Lucia
 Kylie Luc-Padallan
 Calvin Lum
 Stephen Lumley
 Karen Lunn
 John Lyon
 Rick Lystang
 Angela Mac
 Marinette Magallanes
 Tom Maloof
 James Mannix
 Russell Marsh
 Carlos Martinez
 Richard Matthews
 Antonio Mayorga
 Mark Mays
 James Mccasland
 Gydan McCready
 John McCreary
 Heather McCreery
 Tina McDowell
 Jeffrey McGinnis
 Dominic Mckenna
 Robert McLoud
 Jessica McNamara
 James McPherson
 Antonio Melara
 Brad Michaelis
 Fred Michmershuizen
 Christopher Mielke
 Michael Migliorino
 Glenn Mlaker
 William Moco
 Sarah Mohr
 Joe Molaski
 Mark Molina
 Colleen Monasevitch
 John Monteverdi
 Todd Moon
 Edwin Morales
 Rick Murno
 Marie Noel Murphy
 Wil Myers
 Tomoya Nagashima
 Tommasito Napalan
 Robert Nardil
 Karen Nashold
 Sergio Navarrete
 Cheryl Naze
 Patricia Nelson
 News Corp Giving

Keith Newsome
 Andrea Nguyen
 Gabriel Nicdao
 Michael Nieves
 Perry Nikolakakis
 Craig Nitschke
 Bonita Nolan
 Brian Novy
 Ike Nzotta
 William O'Connell
 Maria Soledad Ojeda
 Stanley Ollek, Jr.
 Ira Olney and Troy Arnold
 Peter Oneil
 Barbara O'Neill
 Kile Ozier
 Blasa Ozuna
 Matthew Pace
 Kathryn Page
 Sherry Page
 Bill Pantuso
 Ken Paprockas
 Mischa Park-Doob
 Tim Parker
 Tom Parker
 Jonathan Patrizio
 Kristina Patterson
 Hal Paul
 John Paul and Christopher Soto
 PayPal, Inc.
 Brian Pearlman
 James Pearse
 Amanda Perez
 Jeanette Perez
 Jessica Pessecow
 Brian Peters
 Krista Peters
 Trina Peterson-Woodall
 Frank Petkovich
 Hung Phan
 Jennifer Phan
 Sister Phylliss
 Alex Piloto
 Margot Piper
 David Platt
 Alejandro Ponce
 Tim Power
 Kevin Pressey
 Richard Price
 Judy Ann Pridmore
 Jan Primas
 Sylvia Pringle
 Pri Pruitt
 Lowell Pung
 Quinn Purificato
 Kristen Purvis
 Tobias Quaranta
 Felicitas Ramirez
 Daniel Raymon
 Don Rebsamen
 Claudius Reich
 Nick Reshatoff
 Paul Resuello
 Brooke Rex
 Pamela Rex
 Blancett Reynolds
 Katherine Rhee
 Loyd Rhiddlehoover
 Shannen Rhoda
 Scott Rice
 Matthew Ritchey
 Kelly Rivera-Hart
 Donald Rizzo
 Austin Roach
 Rebecca Robbins
 Zack Robbins
 Favianna Rodriguez
 Fernando Rodriguez
 Jennifer Rodriguez
 Jorge Rodriguez
 Lauren Roger
 Rayson Roldan
 Sister Roma
 Angel Rosario
 Joshua Rosen
 William Ross
 Russell Roybal
 Scott Rupp
 Jeff S.
 Salesforce.org

Bruce Salimbene
Issam Salloum
Leo Samaroo
Ryan Sambila
David Sands
Edward Sanford
Carlos Santamaria
Andy Schaidler
F. A. Schermer
Daniel Schindler
Thomas Schmidt
Mark Schmidtke
Baron Schon
Kenneth Schott
David Schwab
Alexa Seehaver
Trey Sells
Okan Sengun
Vincent Serock
Barbara Sharbono
Roddy Shaul
Diane Shaw
Terrance Shaw
Jason Sheffield
Frank Sibley
David Siegel
Allen Siewert
Glenn Simonsen
Tim Simpson
Kelly Sittig
Craig Smith
Jason Smith
Joshua Smith
Julie Smith
Kyle Smith
Ernest Spinner
Carolyn and Mark Sramek
Blake Stabler
Jessica Standridge
Lisa Stephens
Seymour Stern
Justin Stewart
Jeffrey Stoddard
Brooke Stran
Matthew Stubblefield
Jon Stuber
Jerry Suarez
Eve Sullivan
Joan Sullivan
Neill Sullivan
Lajon Survillion
Alicia Sutton
Richard Sweeney
Tim Swift
Douglas Szmyd
Joseph Tally
Kevin Tam
Patrick Tan
Thomas Tarn
Lorenzo Taylor
Daniel Taylor
Coma Te
Tony Teng
The Cinch/The Blivhead Company
John Thomas
J.T. Thomas
Larry Thomas
William Thomas
Gary Thompsin
Devin Thompson
Kelley Thompson
Graylin Thornton
Zinnia Tianero
James Timpanaro
Xavi Torres
Rob Tosner
Carol Tran
Chris Tran
Trax/Maritsa, Inc.
Bruce Trevithick
Robert Trujillo
Robert Tucker
Alexander Turley
Lemuel Valbuena
Felix Valdivia
Mike Vales
Bert Vander Meeren
Daniel VanHorn
Michael Vargas
Paulo Vargas

Robert Vecchiarello
Timothy Vigue
Lily Vulcano
Charles Wagner and Thomas Culp
Chad Wainwright
Craig Waldo
Bipin Walia
David Wallace
Kenneth Wang
Linda Wargo
Christopher Webb
Andrew Wedge
Bradley Weintraub
Karen Weisman
Richie Weldon
Daniel West
Audra Wheel
Chad White
Christopher White
Carmen Whitesell
Mark Whitfield
Gregg Wilcox
Cynthia Williams
John Williams
Curtis Wilson
Sebastian Wilson
David Wind
Carl Winemiller
Karl Woerdeman
Carl Wolf
Randy Womble
Freeman Wong
Jonathan Wood
Will Woodward
Jeffery Wright
Devin Wu
Steven Yang
Karekin Yarian
David Yensel
Jeffrey Yohalem
Michael Yokeley
Dan Young
Richard Young
Kimberly Youngblood
Jerico Yuse
Gulhan Yuzgec
Jessie Zechnowitz
Ellen Zimmerman
David Zubiria

*Professional Inkind Goods or Services
**Financial Contribution &
Professional Inkind Goods or Services

Gifts In Honor Of

Desmond Ach, by Christian Ach
Jim Barnett, by Zak Berrachdi
Kevin Bitting, by Patrick Coil
Baxter Da Schnauzer, by Christopher White
Zach Dahlgren, by Jennifer Dahlgren
Patrick Daugherty, by
Christopher and Enrique Novoa Payne
Lilia Dgreene, by Marco Rodriguez
Grace Towers DickatNite,
by William McCormick
Eureka Restaurant, by Douglas Mylcraine
Uncle Floyd, by Amy Dodds
Cynthia & Philip James, by Brian James
Dennis Lappe, by J.T. Thomas
Scott Lemons, by Loren Lemons
Tim McShane and Rick Burnham,
by Gordon Hom
Paul Meagher, by Joe Molaski
Marvin Morris, by The Larry and Carie
Haimovitch Charitable Fund
Stewart Nickelhoff, by Tim Simpson
"Cousin" Joe Pessa, by Sharon Lucia
Queen Dilly Dally's Variety Show/Moby Dick
The Best, by William McCormick
Marco Rodriguez, by Neill Sullivan
Alan Tippy, by George Hicks
David Warner, by Mark Kochevar
Pris Wells, by Barbara Greenspan

Gifts In Memory Of

David Basham, by Karen Ratliff
and David Armstrong
Malcom R. Bonard, Jr., by Cynthia
and T. Wayne Lawrence
Mathis Gibson, by Robert Gibson

Laura Lamp Grant, by Kyle
and Michael Thornton-Lamp
Michael "Ande" Henderson, by Bill Stanziani
Gregory Hill, by Doc Duhon
TJ Hopson, by Anna Hammond
Uncle Doodles/Daniel Scott Horton,
by Noel and Ruelle Carstenson
Riley Liming, by Patricia Liming
Brian Macarthur, by Calvin Lum
Cito Napalan, by Tommasito Napalan
Johnnie Norway, by Eli Blair
Bob Pierce, by James Cercone
Tom Regan, by Roberto Cafiero
Steven Rodriguez, by Scott Rice
Bruce S. Smith, by Anonymous Vanguard
Charitable Fund Donor
John Tomlins, by Margaret Ansay
and by Judy Tomlins
Frank Tosner, by Rob Tosner
Julius Turman, by Mr. Henry Doering
and by Patricia Ochoa-Milanfar

We are grateful to the many individuals and institutions who helped to bring PRC's organizational vision to life by contributing to the goals of PRC's ElevateSF Campaign in 2018. This multi-year effort is instrumental to helping us better serve clients today – and for years to come – by opening PRC's new Integrated Service Center for our clients, improving our program impact and our ability to serve as stewards for the members of our community who need us most.

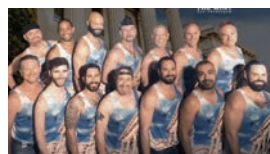
PRC's ElevateSF Campaign Cabinet

Steve Adams
Derek Barnes
Doug Browning
Collin Burry
Karl Christensen
Milko Encinas
Larry Gunn
Gary Nichols
Laura Powell
Kent Roger, Esq.
Donna Sachet
Mike Smith
Meredith Treaster

ElevateSF
Campaign to Uplift San Francisco

The 2019 Bare Chest Calendar fundraisers

Orlando Baez
Marc Baumann
Russ Bono
Andy Hirst
A.J. Huff
Max Killen
Joe Pessa
Sister Phyliss
Larry Rich
Marco Rodriguez
Mark Troy
Tim Valdivia
Mark Whitfield
T.J. Williams



PRC's Inkind Auction Contributors

Academy of Friends
Almar Resort
American Conservatory Theater
Asian Art Museum
AsiaSF
Auto Erotica
Azari Vineyards

Barefoot Wines
Beach Blanket Babylon
Berkeley Repertory Theatre
Berkeley Symphony
Big 5 Sporting Goods
Bi-Rite Market
Bitter Queens
Boudin Enterprises
California Academy of Sciences
California Shakespeare Theatre
Castro Nail Salon
The Cheesecake Factory
Chez Panisse Restaurant
Commonwealth Club of California
Delfina Restaurant
diPietro Todd Salon + Academy
The Diva Foundation
Dogpatch Boulders
Fifth Generation Inc. /
Tito's Handmade Vodka
Fine Arts Museums of San Francisco
Fogo de Chão Brazilian Steakhouse
Folsom Street Events
Four Seasons Hotel San Francisco
Frameline
Furnished Quarters
The GLBT Historical Society & Museum
Grand Sierra Resort and Casino
Miguel Gutierrez-Ranzi
Harrah's & Harveys Lake Tahoe
Harris' Restaurant
Harveys
Hint Water
Hotel Avante
Hotel Kabuki
Hotel Vitale
L'Ardoise Bistro
Levi Strauss & Company
Macy's Foundation
Marin Theatre Company
Mussa Lema
Napa Valley Wine Train
New Conservatory Theatre Center
Oakland East Bay Symphony
Oakland Museum of California
One Market Restaurant
Opus One Winery
Osmosis Day Spa Sanctuary
Pier 39 Limited Partnership
Press Club
Robert Lajzewski and Ramon Espinoza
R3 Hotel
Sheryl Lee Ralph
The Richmond/Ermet Aid Foundation (REAF)
Michael Richter
Paul Saccone and Ryan Knight
Donna Sachet
San Francisco Gay Men's Chorus
San Francisco Giants
San Francisco Marriott Marquis
San Francisco Performances
San Jose Sharks
Greg Scarnici
Schmidt's
Schumacher Photography
Sol Rouge
Spirit Works Distillery
Sports Basement
Stephen Roberts Personal Catering
Timothy Tierney
Total Wine & More
Uber
United Airlines
Until There's a Cure Foundation
Urban Putt
Gary Virginia
The Walt Disney Family Museum
Waterbar Restaurant
Whitney Museum of American Art
Wild Palms Hotel
The Winery SF

BOARD OF DIRECTORS

Doug Browning, President
Larry Gunn, Vice President
Bill Matheson, Esq., Treasurer
Scott Justus, CVA, Secretary
Ryo Ishida
Anne Luna
Ryan McKeel
Jacques Michaels
Kent M. Roger, Esq.
Brian Schneider
Tim Schroeder
Merredith Treaster

ADVISORY BOARD

Michael F. Bell
Michael S. Bernick, Esq.
James Carter
Karl H. Christiansen, Esq.
Donna Sachet
David Stith
Gary Virginia
Daryl Walker

EXECUTIVE LEADERSHIP

Brett Andrews, Chief Executive Officer
Katherine Bella, Chief Strategy Officer
John Fostel, Chief Clinical Officer
Robert Pascual, Chief Financial Officer
Chuan Teng, Chief Programs Officer
Joe Tuohy, Chief Operating Officer
Jim Wegman, Chief Information Officer

THE MISSION OF PRC IS TO HELP PEOPLE AFFECTED BY HIV/AIDS, SUBSTANCE USE, OR MENTAL HEALTH ISSUES BETTER REALIZE OPPORTUNITIES BY PROVIDING INTEGRATED LEGAL, SOCIAL, AND HEALTH SERVICES THAT ADDRESS THE BROAD RANGE OF SOCIAL RISK FACTORS THAT IMPACT WELLNESS AND LIMIT POTENTIAL.

Through a uniquely integrated service continuum PRC fights to reduce the social, health, and economic disparities facing our community. We're linking the wellness, income, and housing ladders so vulnerable adults—affected by mental health, substance use, and HIV/AIDS—and their families can break overlapping cycles of poverty, stigma, homelessness, and decline. Over 5,000 people access our services each year, gaining a lifeline and a path to long term stability and success.

- BEHAVIORAL HEALTH NAVIGATION CENTER
- INPATIENT DETOX
- EMERGENCY FINANCIAL ASSISTANCE
- LEGAL ADVOCACY
- SUBSTANCE USE AND MENTAL HEALTH RESIDENTIAL TREATMENT
- TRANSITIONAL CO-OP LIVING
- PERMANENT SUPPORTIVE HOUSING
- WORKFORCE DEVELOPMENT

170 9th Street
San Francisco, CA 94103
T 415-777-0333
F 415-777-1770
www.prcsf.org
[f /positiveresource](https://www.facebook.com/positiveresource)
[t @prc_sf](https://twitter.com/prc_sf)
[in company/prc-sf](https://www.linkedin.com/company/prc-sf)

“MANY OF US — ALL OF US, I DARE SAY — ARE TOUCHED BY STRUGGLES WITH MENTAL HEALTH, SUBSTANCE USE, OR HIV/AIDS WHETHER IT'S IN OUR OWN LIVES OR THOSE OF FRIENDS AND LOVED ONES. BUT WE DON'T ALL HAVE ACCESS TO SUPPORTIVE RESOURCES, MONEY, FAMILY, OR COMMUNITY NETWORKS WHEN THEY ARE NEEDED. FOR THOSE INDIVIDUALS ACROSS SAN FRANCISCO, PRC IS THAT BRIDGE, A LIFELINE, AND THE CRITICAL LINK INTO COMMUNITY.”

Brett Andrews, Chief Executive Officer